



**SPINFIRE**  
CONVERT

*Powered by Theorem Technology*

## Product Release Announcement

Product Category	Spinfire Convert
Product Group	CATIA V5 <> JT
Product Release Version	28.2

Document Type	Product Release Announcement
Document Status	Released
Document Revision	1.0
Document Author	John Welton
Document Issued	02/12/2025

## Table of Contents

<b>History .....</b>	<b>3</b>
<b>Product Codes.....</b>	<b>4</b>
<b>Supported Application Revisions .....</b>	<b>5</b>
<b>Supported Operating Systems .....</b>	<b>5</b>
<b>Installation Process Considerations .....</b>	<b>6</b>
<b>Distribution Media.....</b>	<b>6</b>
<b>New Features / Enhancements .....</b>	<b>7</b>
CATIA V5 - JT .....	7
<b>Known Limitations and Restrictions.....</b>	<b>8</b>
CATIA V5 to JT (CA5JT) .....	8
JT to CATIA V5 (JTCA5) .....	8
General.....	8
<b>Resolved Support Calls .....</b>	<b>9</b>

## History

Revision	Update Information
1.0	Initial document release for Version 28.2

## Product Codes

Product Code	Product Description
CA5JT-U1	CATIA V5 (CAA Based) to JT (uni-directional)
JTCA5-U1	JT to CATIA V5 (CAA Based ) (uni-directional)
CA5JT-A5	CATIA V5 (CAA Based ) to JT (uni-directional) with PMI Add On
CA5JT-A6	CATIA V5 (CAA Based ) to JT (uni-directional) with Electrical Add On
CA5JT-A7	CATIA V5 (CAA Based ) to JT (uni-directional) with 3D PDF Add On
CA5JT-A8	CATIA V5 (CAA Based ) to JT (uni-directional) with Composite Services Add On
JTCA5-A1	JT to CATIA V5 (CAA Based ) (uni-directional) with 3DPDF Add On
JTCA5-A2	JT to CATIA V5 (CAA Based ) (uni-directional) with 3DXML Export Module
CATJT-U1	CATIA V4 to JT (uni-directional)
CAGJT-U1	Combined CATIA V4 & CATIA V5 to JT (uni-directional)
CAGJT-U2	Combined CATIA V4 & CATIA V5 to JT (uni-directional) with PMI Add On

## Supported Application Revisions

The following application revisions have been qualified with this release.

Application	Revision
CATIA V4	All revisions
CATIA V5	CATIA V5-6R2020
	CATIA V5-6R2021
	CATIA V5-6R2022
	CATIA V5-6R2023
	CATIA V5-6R2024
	CATIA V5-6R2025
JTOpen	JTK 11.7

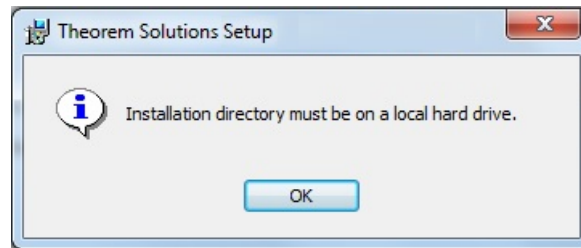
## Supported Operating Systems

The following operating systems have been qualified with this release

Operating System	Qualification Status
Windows 10	Qualified and fully supported for CATIA V4 CATIA V5-6R2020 CATIA V5-6R2021 CATIA V5-6R2022 CATIA V5-6R2023 CATIA V5-6R2024 CATIA V5-6R2025
Windows 11	

## Installation Process Considerations

Starting with version 20.0 of Theorem Solutions applications changes have been made to the installation process. These changes have transitioned from a JAVA based installer package to a standard Microsoft Installer (.msi) package. A current limitation of the Microsoft msi method is that the software cannot be installed directly on to either externally mapped or network drives when installed from a client machine:



Therefore, the installation must be performed to a drive that is local to the machine itself. If you are attempting to install the software onto a network drive, then please refer to the configuration guide available from the following link:

[http://www.theorem.com/documentation/Documentation/Client\\_Configuration.pdf](http://www.theorem.com/documentation/Documentation/Client_Configuration.pdf).

## Distribution Media

CD images of the latest release are available from the following download site. The installation media for the bi-directional product is also the same media when installing a uni-directional variant.

Product Codes	Select link to download CD images
All Product Codes for all supported versions of NX	<a href="#">CAD 28.2 CA5JT WIN.01.msi</a>
SpinFire Unified Interface	<a href="#">CAD 28.2 UI WIN.01.msi</a>
Theorem License Manager	<a href="#">CAD FLEXLM 11.19 WIN.01.msi</a>

## New Features / Enhancements

The following new features or enhancements have been introduced with this release.

### CATIA V5 - JT

Ref ID	New Feature / Enhancement Description
1	New argument: READ_COMPOSITES_STOP - Verifies a Theorem Composite license is available, if not, stops the translation
2	New argument: DONT_READ_COMPOSITE_PLY_SURFACE – Requires a SpinFire Convert Composite license and used in conjunction with READ_COMPOSITES. Returns only the Geometry and not the Topology of the Composite.
3	New argument: READ_PMI_STOP - Verifies a Theorem PMI license is available, if not, stops the translation
4	New argument: READ_GEOMETRY_MATCH_PATH - Used in conjunction with OUTPUT_MBD_LEAF_NODES. Ensures the JT PMI Associations match the path of the Specification Tree
5	New argument: WR_REF_PLANES - Create Reference Planes in the JT PMI Tree
6	New argument: CREATE_POINT_AS_REF_POINT - Create Reference Points in the JT PMI Tree
7	New argument: GROUP_RIBS - Used in conjunction with OUTPUT_MBD_LEAF_NODES. Creates an additional group as a container for the rib, thus creating the proper JT structure.
8	New argument: DATUM_FACES [size] - Create scaled Planar Faces (default size: 15)
9	New argument: REFSET_ATTR_VIS - Enables REFSET001 in the JT properties
10	New argument: REF_SET_VIEW_OPTS - Adds the following options: REF_SET_VIEW and STRUCT_MODE MONO. REF_SET_VIEW is used in conjunction with OUTPUT_MBD_LEAF_NODES to create a "VIEW" Reference Set. This Reference Set will match the Hide/Show status of the CATIA nodes when the CATIA file is opened. All other required geometry goes into the "Entire Part" Reference Set. STRUCT_MODE MONO is required properly create the sub-nodes in JT.
11	New argument: WASH_GRP_VIS - Used in conjunction with OUTPUT_MBD_LEAF_NODES. When a parent node is invisible and its children visible, but the intention is to hide the children.

## Known Limitations and Restrictions

The following limitations and restrictions have been identified prior to release.

### CATIA V5 to JT (CA5JT)

Ref ID	Limitations and Restrictions
1	

### JT to CATIA V5 (JTCA5)

Ref ID	Limitations and Restrictions

### General

Ref ID	Limitations and Restrictions
1	When using the argument 'REF_SET_VIEW_OPTS', the VIEW Reference set created in the JT file is best viewed in Teamcenter Visualization 2406 and higher. This is a Teamcenter Visualization restriction.



## Resolved Support Calls

The following list of Support Calls are resolved with this release.

Support Call ID	Brief Description
TH-2094	View Ref Set Contains Unwanted Nodes
TH-2093	VIEW Ref Set Contains Unwanted nodes
TH-2092	VIEW Reference Set Contains unwanted nodes
TH-2091	VIEW Ref Set contains Unwanted Nodes
TH-2090	VIEW Ref Set contains extra Nodes
TH-2089	VIEW Ref Set contains wrong Node
TH-2058	Datum Geometry highlighting when GD&T Frame is Selected
TH-2053	in CAITA, the PMI is associated to 7 faces, in JT it is only 5
TH-2020	JT file contains Transparent faces. No Transparency defined in CATIA
TH-1966	new version of convertor
TH-1948	Using 28.1.001, Extra face appears in JT file
TH-988	Using 25.2.002 faces are missing from the JT file
TH-986	Using 25.2.002, faces are missing from the JT file
TH-936	Missing JT mass properties with CADVerter 27.0
TH-839	Catia V5 to JT converted file is KO in Daimler JTSP, open solid.
TH-441	Using 25.2.002 PMI is not processing correctly.
TH-210	Using 25.2.001 and V5R32 to the PMI in the JT shows leaders clashing with the label name.



**SPINFIRE**  
CONVERT

**UK, Europe and Asia  
Pacific Regions**



THEOREM HOUSE  
MARSTON PARK  
BONEHILL RD  
TAMWORTH  
B78 3HU  
UNITED KINGDOM



[sales.theorem@techsoft3d.com](mailto:sales.theorem@techsoft3d.com)



+44 (0) 1827 305 350

**USA and the America**



THEOREM SOLUTIONS INC  
100 WEST BIG BEAVER  
TROY  
MICHIGAN  
48084  
USA



[sales-usa.theorem@techsoft3d.com](mailto:sales-usa.theorem@techsoft3d.com)



+ (513) 576 1100



**TECHSOFT3D.COM**