



# SPINFIRE CONVERT

Powered by Theorem Technology

## User Guide CATIA V5 <> JT

Product Category	CADPublish
Product Group	CATIA V5 <> JT
Product Release Version	29.0

Document Type	User Guide
Document Status	Released
Document Revision	1.0
Document Author	John Welton
Document Issued	21/04/2026

📍 THEOREM HOUSE  
MARSTON PARK  
BONEHILL RD  
TAMWORTH  
B78 3HU  
UNITED KINGDOM

☎ +44(0)1827 305 350

📍 THEOREM SOLUTIONS INC.  
100 WEST BIG BEAVER  
TROY  
MICHIGAN  
48084  
USA

☎ +1 (513) 576 1100

## Contents

<b>Overview of SpinFire Convert .....</b>	<b>4</b>
<i>About SpinFire Convert.....</i>	<i>4</i>
<b>The CATIA V5 &lt;&gt; JT Translator .....</b>	<b>6</b>
<i>Primary Product Features.....</i>	<i>6</i>
<i>Primary Product benefits? .....</i>	<i>7</i>
<b>Getting Started .....</b>	<b>8</b>
<i>Documentation &amp; Installation Media .....</i>	<i>8</i>
<i>Installation.....</i>	<i>8</i>
<i>License Configuration.....</i>	<i>8</i>
<i>Using the Product .....</i>	<i>8</i>
<b>Using the Product.....</b>	<b>9</b>
<i>Default Translations .....</i>	<i>9</i>
Default Translation – via the Unified Interface .....	9
Default Translation – via the Command Line .....	10
<b>Translator Customization .....</b>	<b>12</b>
<i>Common Options for CATIA V5 to JT.....</i>	<i>12</i>
CATIA V5 Read Arguments .....	12
JT Write Arguments .....	14
CATIA V5 to JT Entity Masking Arguments.....	14
CATIA V5 to JT General Arguments .....	16
Processing CATIA V5 FTA data to JT PMI.....	16
Options for Processing FTA Data with Filled Text.....	16
Options for Processing FTA Data using Outline Text .....	19
<i>Common Options for JT to CATIA V5.....</i>	<i>20</i>
JT Read Arguments.....	20
CATIA V5 Write Arguments.....	21
JT to CATIA V5 General Arguments .....	22
<b>Command Line Advanced Arguments.....</b>	<b>24</b>
<i>CATIA V5 Advanced Arguments .....</i>	<i>24</i>
<i>JT Advanced Arguments .....</i>	<i>24</i>
<b>Translating Interactively from within CATIA V5 .....</b>	<b>25</b>
<i>Save As JT .....</i>	<i>25</i>
<i>Open JT Data .....</i>	<i>26</i>
<i>SpinFire Convert Import and Export.....</i>	<i>27</i>
<b>Appendix A – CATIA V5 Configuration .....</b>	<b>29</b>

<i>Introduction.....</i>	<i>29</i>
<i>Conventions.....</i>	<i>29</i>
<i>CATIA V5 Installation Directory .....</i>	<i>29</i>
<i>Running CATIA V5 Translators.....</i>	<i>29</i>
<i>CATIA V5 Environment DIRENV &amp; ENV.....</i>	<i>30</i>
<i>Checking the CATIA V5 Environment.....</i>	<i>30</i>
<i>Checking the SpinFire Convert Shared Library.....</i>	<i>31</i>
<b>Appendix B – JT Configuration File .....</b>	<b>32</b>
<i>Introduction.....</i>	<i>32</i>
<i>The Setup Section.....</i>	<i>32</i>
<i>To edit setup options .....</i>	<i>32</i>
<i>The Filter Section.....</i>	<i>35</i>
<i>To edit filter options.....</i>	<i>35</i>
<i>The Metadata Section .....</i>	<i>35</i>
<i>To edit metadata options.....</i>	<i>35</i>
<i>The Level of Detail Section .....</i>	<i>36</i>
<i>The JT Options Section.....</i>	<i>36</i>
<i>The Catia5 Options Section .....</i>	<i>41</i>
<i>The Catia4 Options Section .....</i>	<i>49</i>
<i>The General Options Section.....</i>	<i>52</i>
<b>Appendix C – Error Codes .....</b>	<b>54</b>
<i>Common Error Codes.....</i>	<i>54</i>

## Overview of SpinFire Convert

### About SpinFire Convert



**SpinFire Convert** is a world leader in the field of Engineering Data Services and Solutions. This leadership position stems from the quality of our technology and the people in the company. Quality comes not only from the skills and commitment of our staff, but also from the vigorous industrial use of our technology & services by world leading customers.

We are proud that the vast majority of the world's leading Automotive, Aerospace, Defense, Power Generation and Transportation companies and their Supply chains use our products and services daily. Working closely with our customers, to both fully understand their requirements and feed their input into our development processes has significantly contributed to our technology and industry knowledge.

SpinFire Convert has strong relationships with the major CAD and PLM vendors, including Autodesk, Dassault Systemes, ICEM Technologies (a Dassault company), PTC, SolidWorks, Spatial Technology and Siemens PLM Software. These relationships enable us to deliver best-in-class services and solutions to engineering companies worldwide.

## CAD PROCESSING PRODUCTS



*Automatically Process and Publish Inbound CAD files (Formerly CAD Publisher)*

- [Documentation](#)
- [Knowledge Base](#)
- [Archived Documentation](#)



*Seamless data exchange between CAD and Visualization (Formerly Theorem CADTranslate & CADPublish)*

- [Documentation](#)
- [Knowledge Base](#)
- [Archived Documentation](#)

## CAD VIEWING PRODUCTS



*Comprehensive interrogation of 2D and 3D CAD Files (Formerly Spinfire Ultimate)*

- [Documentation](#)
- [Knowledge Base](#)
- [Archived Documentation](#)



- [Documentation](#)
- [Knowledge Base](#)
- [Archived Documentation](#)

## The CATIA V5 <> JT Translator

The CATIA V5 to JT translator may be installed on a number of machines each accessing a central network-floating license.

The CATIA V5-JT Translator is a bi-directional direct database converter between the Dassault Systèmes CATIA V5 Modelling Application and the JT file format, used by the Siemens Teamcenter Visualization products.

It enables the user to convert all forms of 3D Mechanical Design Geometry and Assembly data, together with system defined attribute information, colour information, between these two systems. This product is designed for companies using CATIA V5 who have selected JT to be their main method of collaboration and communication between OEMs and their customers or suppliers.

It is also a major method of visualization and therefore companies using JT based solutions need to translate their CATIA V5 data into the JT format.

The translator can be invoked in either an interactive or batch mode with the command line interface allowing the conversion process to be integrated into any process oriented operation. Alternatively, from SpinFire Convert version 18.0 the conversion process may be operated by using the new Unified Interface.

### Primary Product Features

- Converts all types of geometry, wire frame, surfaces, trimmed surfaces (faces) and solid models.
- Converts assembly structure between both systems.
- Converts attribute data including colour and layer information.
- Integrated with the CATIA V5 installation.
- The conversion process can be run Interactively, Batch Mode or using the new Unified Interface
- Command line interface allows process integration.
- Data can be filtered by layer and entity type during processing. Geometry can be filtered and selectively processed.
- Uses the CATIA V5 API and Siemens JTOpen API to read and write data.
- In creating JT files a number of data types can be generated. A faceted representation, a JT Brep definition or an XT Brep definition. As standard a faceted representation is created with the user selecting whether JT or XT Brep definition is created. Converts all types of geometry, wire frame, surfaces, trimmed surfaces (faces) and solid models.

## Primary Product benefits?

- Being a direct database converter all pre and post processing is eliminated, saving time.
- Reduce costs due to processing time and increase overall conversion success levels by filtering input data and focusing the conversion to only those elements required.
- Reduce costs and risks associated to accessing the wrong version of data by integrating the conversion process into a related business processes.
- With over 30 years of industrial use SpinFire Convert (formally Theorem) translation products robustness and quality is well proven, reducing your business risk.

This document will focus specifically on guidance for the use of the Visualize 3D for CATIA V5 – JT product. For information regarding any SpinFire Convert product ranges please contact: [sales-spinfire.applications@techsoft3d.com](mailto:sales-spinfire.applications@techsoft3d.com)

## Getting Started

### Documentation & Installation Media

The latest copy of the User Guide documentation can be found on our web site at:  
<https://docs.techsoft3d.com/spinfire/convert/index.html>

Each product has a specific link that provides user documentation in the form of PDF and Tutorials.

The latest copy of SpinFire Convert software can be found via the link above and by searching for the specific product. Each product has a specific link to the Product Release Document, which contains a link to the download location of the installation CD.

Alternatively, you can request a copy of the software to be shipped on a physical CD.

### Installation

The installation is run from the .msi file download provided. For full details of the installation process, visit <https://docs.techsoft3d.com/spinfire/convert/index.html> and select UI from the product selection list.

### License Configuration

To run any product a valid license file is required. The Flex License Manager is run from the .msi file download provided. For full details of the installation process, visit <https://docs.techsoft3d.com/spinfire/convert/index.html>

### Using the Product

To use the product, follow the documented steps found in this document or follow the online video tutorials which can be found from <https://docs.techsoft3d.com/spinfire/convert/index.html>

## Using the Product

### Default Translations

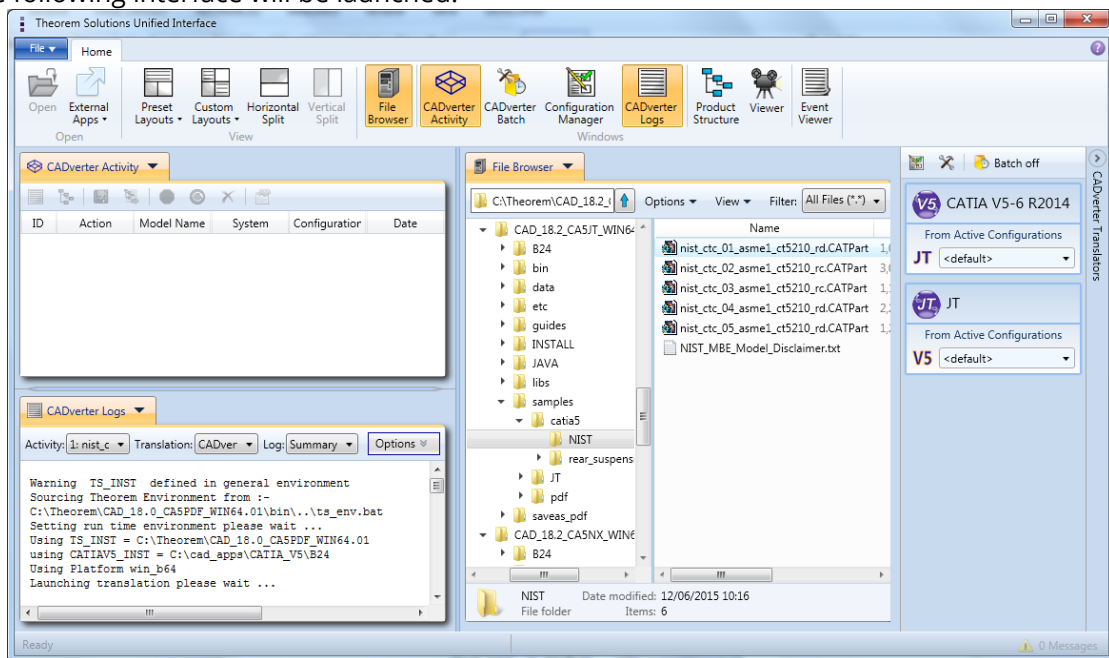
#### Default Translation – via the Unified Interface

The Unified Interface can be started via the Start Menu – if a shortcut was added during installation.

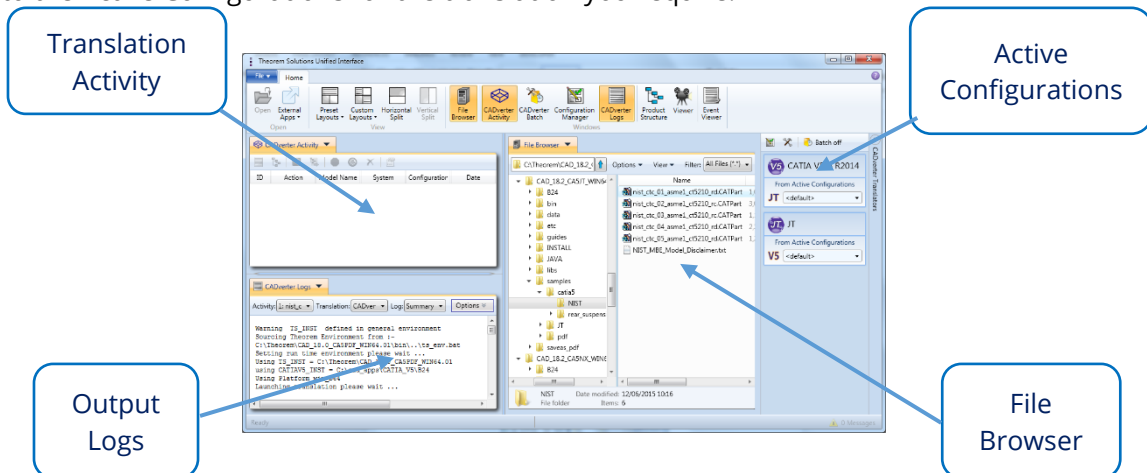
Alternatively, the Unified Interface can be run via a Windows Explorer selection in:

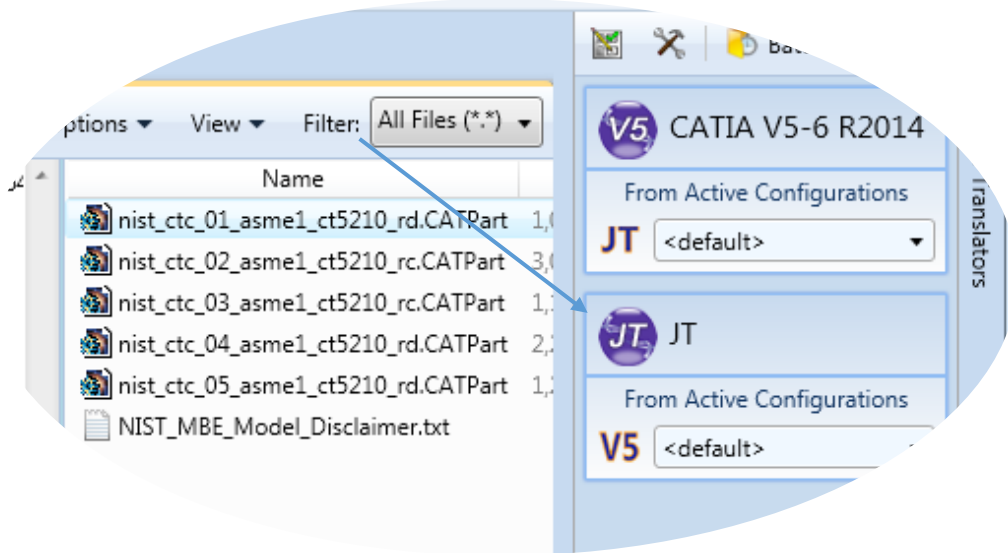
**<UI\_installation\_directory>\bin\Unified\_Interface.cmd**

The following interface will be launched:



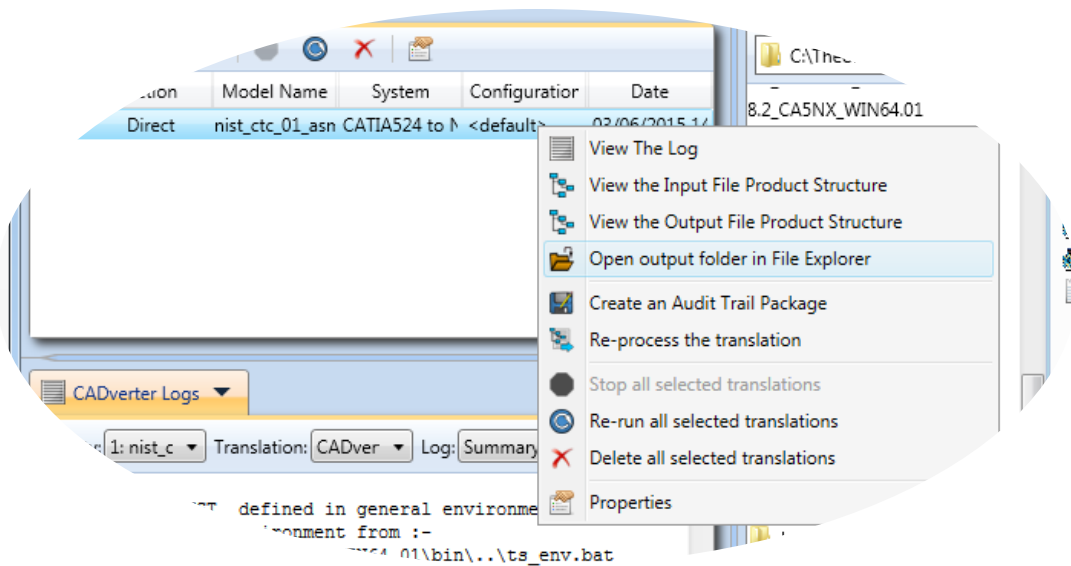
The default layout is split into 4 primary areas, which can be altered to the users prefer: The simplest way to translate from CATIA V5 or JT is to drag a file from the file Browser Pane on to the Active Configurations for the translation you require.





On completion, the Unified Interface will display the activity information and details from the log file created during the translation, if requested, in the Translation Activity and Output Log panes, respectively.

The generated output data can be located by selecting the translation from the Activity pane and opening the output folder:



### Default Translation – via the Command Line

Running a translation via the command line can be carried out via the **cad\_run.cmd** file located in the **<installation\_directory>\bin** directory. The format of the command is as follows when translating from CATIA V5 to JT:

**<Translator\_installation\_directory>\bin\cad\_run.cmd CATIA5[XX]JT -i <input\_file> -o <output\_file>**

The format of the command is as follows when translating from JT to CATIA V5:

**<Translator\_installation\_directory>\bin\cad\_run.cmd JT\_CATIA5[XX] -i <input\_file> -o  
<output\_file>**

(Note! Replace the [XX] seen in the example with the version of CATIA V5 you are using. E.g. for CATIA V5 R34 (V5-6 R2024), change to CATIA534):

```
C:\>"C:\Program Files\Theorem\27.0\bin\cad_run.cmd" CATIA534_JT -i "C:\Program Files\Theorem\27.0\samples\catia5\NIST\ni  
st_ctc_01_asme1_ct5210_rd.CATPart" -o C:\TEMP\NIST_Output.jt
```

The example above will translate a CATIA V5 sample file provided within the installation and finish with the following screen output when successful:

```
Translation Complete...  
Exporting Parts and Assembly to JT Files  
  
*****  
* JT file successfully created *  
* C:\TEMP\NIST_Output.jt *  
*****  
  
*****  
* CATIA5 to JT conversion ... *  
* ... Completed Successfully *  
* Output JT file created *  
* *  
*****
```

The file will be output to the target location. In this case:

***C:\Temp\NIST\_Output.jt***

## Translator Customization

SpinFire Convert allows the information that is read from the source system and written to the target system to be tailored via a set of user specified arguments. Commonly used arguments are supported via the Unified Interface, with Advanced Arguments being described within this document for use in the Unified Interface or via the Command Line invocation.

### Common Options for CATIA V5 to JT

Within the Configuration Manager pane of the Unified Interface, arguments that can be specified when publishing CATIA V5 data into JT are grouped into 4 areas:

- CATIA V5 Read – Those arguments that affect how data is read from CATIA V5
- JT Write – Those arguments that affect how the data is written to JT
- Entity Mask – Those arguments that allow specific read entities to be masked
- General – Those arguments that are common to ALL Publishing activities regardless of source data.

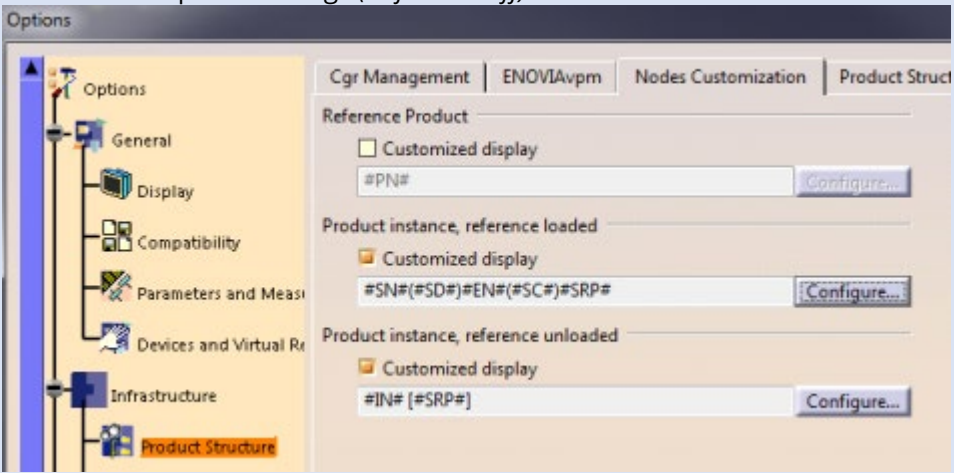
#### CATIA V5 Read Arguments

The image below shows the CATIA V5 Read arguments that are available, with their default settings:

CATIA V5 Read		JT Write	Entity Mask	General
Option Name	Value			
Read PMI	<input type="checkbox"/>			
PMI Level	All			
Read Captures	<input checked="" type="checkbox"/>			
Read FTA Reference Geometry	<input type="checkbox"/>			
Maintain CATIA V5 Instance Names	<input type="checkbox"/>			
Read Face Colours	<input type="checkbox"/>			
Read Face Opacity	<input type="checkbox"/>			

Each of these options is described below:

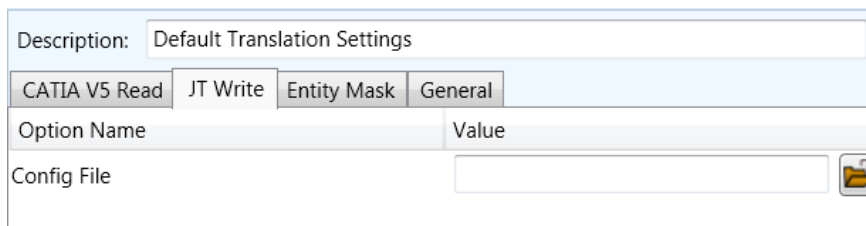
Option	Description
<b>Read PMI</b>	Enables PMI data read from the V5 file. <i>(Default is ON)</i> . <ul style="list-style-type: none"> <li>• Command Line Syntax:</li> </ul>

	<ul style="list-style-type: none"> <li>○ dont_read_pmi – to turn off</li> </ul> <p><b>Note!</b> When 'read_pmi' is enabled it also enables the 'fill_pmi_arrows', 'fill_pmi_text' and 'pmi_filled_text' options. These can be overridden by setting the Advanced arguments: 'dont_fill_pmi_arrows' and/or 'dont_fill_pmi_text'</p>
<p><b>PMI Level</b></p>	<p>A secondary argument to 'Read PMI' and allows control of the level of PMI to be read. Default is ALL when 'Read PMI' is marked as ON.</p> <ul style="list-style-type: none"> <li>• Options Available (command line syntax in italics and square brackets next to the option) <ul style="list-style-type: none"> <li>○ All - [read_pmi]</li> <li>○ Part Level - [read_part_pmi]</li> <li>○ Assembly Level - [read_assy_pmi]</li> <li>○ Assembly Set (From CATPart) - [read_part_assy_pmi]</li> <li>○ Assembly Set (All) - [read_all_assy_pmi]</li> </ul> </li> </ul>
<p><b>Read Captures</b></p>	<p>A secondary argument to 'Read PMI' and allows the control over whether captures are read as part of the process. Default is ON when 'Read PMI' is marked as ON.</p> <ul style="list-style-type: none"> <li>• Command Line Syntax: <ul style="list-style-type: none"> <li>○ read_captures</li> <li>○ dont_read_captures – to turn off</li> </ul> </li> </ul>
<p><b>Read FTA Reference Geometry</b></p>	<p>Enables reading of FTA Reference Geometry (<i>Default is Off</i>)</p> <ul style="list-style-type: none"> <li>• Command Line Syntax: <ul style="list-style-type: none"> <li>○ read_geometry – to turn on</li> </ul> </li> </ul>
<p><b>Maintain CATIA V5 Instance Names</b></p>	<p>Honours CATIA V5 <i>Tools-&gt;Options-&gt;Infrastructure-&gt;Product Structure-&gt;Nodes Customization</i> panel settings (<i>Default is Off</i>)</p>  <ul style="list-style-type: none"> <li>• Command Line Syntax: <ul style="list-style-type: none"> <li>○ ditto_naming V5 – to turn on</li> </ul> </li> </ul>
<p><b>Read Face Colours</b></p>	<p>Read the face colours (Default is OFF)</p> <ul style="list-style-type: none"> <li>• Command Line Syntax:</li> </ul>

	<ul style="list-style-type: none"> <li>○ read_face_colours – to turn on</li> </ul>
<b>Read Face Opacity</b>	<p>Read the opacity of the face (Default is OFF)</p> <ul style="list-style-type: none"> <li>• Command Line Syntax:             <ul style="list-style-type: none"> <li>○ read_materials – to turn on</li> </ul> </li> </ul>

### JT Write Arguments

The image below shows the Write JT arguments that are available, with their default settings:

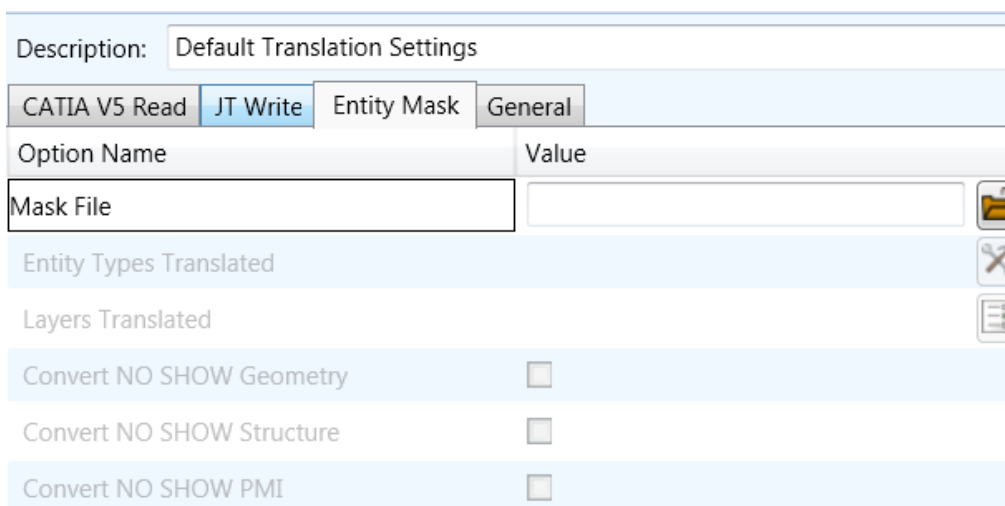


Each of these options is described below:

Option	Description
Config File	<p>Allows a JT configuration file to be specified. Please see <a href="#">Appendix B</a> for a full description of the JT config file format.</p> <ul style="list-style-type: none"> <li>• Command Line Syntax             <ul style="list-style-type: none"> <li>○ -z [path_to_file]</li> </ul> </li> </ul>

### CATIA V5 to JT Entity Masking Arguments

The image below shows the Masking arguments that are available, with their default settings:



Each of these options is described below:

Option	Description
Mask File	Specifies the Mask File to be written to, that can be referenced by future translations. A Mask file <b>MUST</b> be specified if masking is required. The first line in this file is OFF ALL ENT: <ul style="list-style-type: none"> <li>• Command Line Syntax:               <ul style="list-style-type: none"> <li>○ Mask &lt;filename&gt;</li> </ul> </li> </ul>
Entity Types Translated	Specifies a selection list from which to select which entity types are to be processed. The following types are available: "POI","CUR","SKI","SOL","ISO","TEX","AXI" <ul style="list-style-type: none"> <li>• Command Line Syntax:               <ul style="list-style-type: none"> <li>○ Add any of the above to the specified mask file, one entry per line prefixed by the word ON, e.g. ON POI to ensure they are considered in the translation</li> </ul> </li> </ul>
Layers Translated	Specifies a selection list from which to select which layers are to be processed. <ul style="list-style-type: none"> <li>• Command Line Syntax:               <ul style="list-style-type: none"> <li>○ A single entry of ON ALL LAY must precede any Layer Mask command.</li> <li>○ Add a list or range of numbers representing layer to be processed to the specified mask file to ensure they are NOT considered in the translation e.g. OFF LAY 114,149,166,167,168</li> </ul> </li> </ul>
Convert NO SHOW Geometry	Enables Hidden geometry to be processed ( <i>Default is Off</i> ) <ul style="list-style-type: none"> <li>• Command Line Syntax:               <ul style="list-style-type: none"> <li>○ Add the following entry to the Mask file:                   <ul style="list-style-type: none"> <li>▪ <b>ON NOSHOW</b></li> </ul> </li> </ul> </li> </ul>
Convert NO SHOW Structure	Enables Hidden Assembly Structure to be processed ( <i>Default is Off</i> ) <ul style="list-style-type: none"> <li>• Command Line Syntax:               <ul style="list-style-type: none"> <li>○ Add the following entry to the Mask file:                   <ul style="list-style-type: none"> <li>▪ <b>ON NOSHOW STR</b></li> </ul> </li> </ul> </li> </ul>
Convert NO SHOW PMI	Enables Hidden PMI to be processed ( <i>Default = Off</i> ) <ul style="list-style-type: none"> <li>• Command Line Syntax:               <ul style="list-style-type: none"> <li>○ Add the following entry to the Mask file:                   <ul style="list-style-type: none"> <li>▪ <b>ON NOSHOW PMI</b></li> </ul> </li> </ul> </li> </ul>

### CATIA V5 to JT General Arguments

CATIA V5 Read	JT Write	Entity Mask	General
Option Name		Value	
Mass Properties		<input type="checkbox"/>	
Retain Assembly Structure		<input checked="" type="checkbox"/>	
Advanced		<input type="text"/>	

The image below shows the General arguments that are available, with their default settings.

Each of these options is described below:

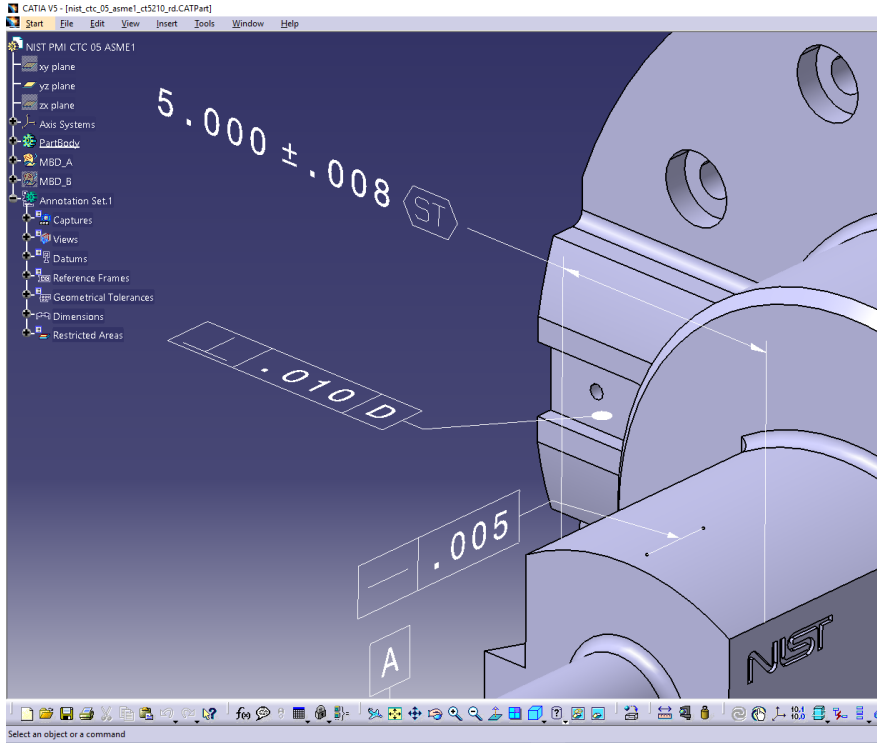
Option	Description
Mass Properties	Allows Mass Property information to be read from the source data and written as attributes ( <i>Default is OFF</i> ) <ul style="list-style-type: none"> <li>• Command Line Syntax:                             <ul style="list-style-type: none"> <li>○ mprops</li> </ul> </li> </ul>
Retain Assembly Structure	Maintain the assembly structure during translation. ( <i>Default is ON</i> ) <ul style="list-style-type: none"> <li>• Command Line Syntax:                             <ul style="list-style-type: none"> <li>○ offditto – to turn off</li> </ul> </li> </ul>
Advanced	Allows any of the Command Line Advanced arguments documented to be passed to the Unified Interface invocation.

### Processing CATIA V5 FTA data to JT PMI

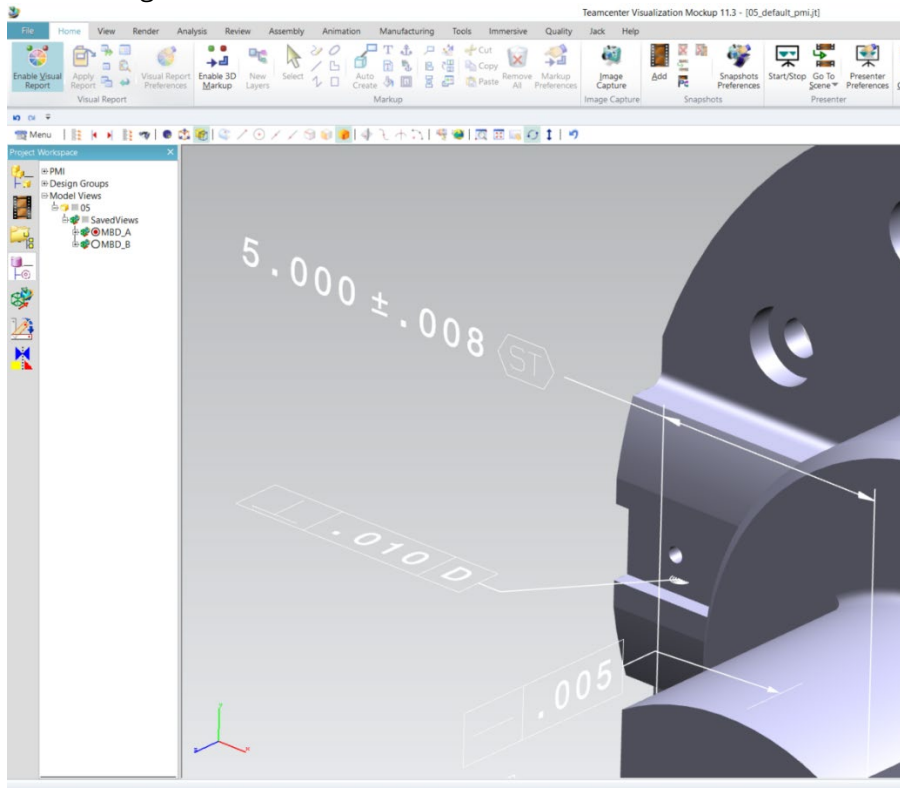
When using the optional CATIA V5 to JT PMI add-on module all CATIA V5 FTA data can be translated to JT PMI output. This includes the translation of 3D dimensions and annotations which are mapped to the equivalent JT PMI entities. In addition, CATIA V5 3D sections are also able to be translated. The CATIA V5 Capture definitions, which manage the visibility of selective FTA elements as well as the view zoom and orientation, are directly mapped to JT Model Views.

### Options for Processing FTA Data with Filled Text

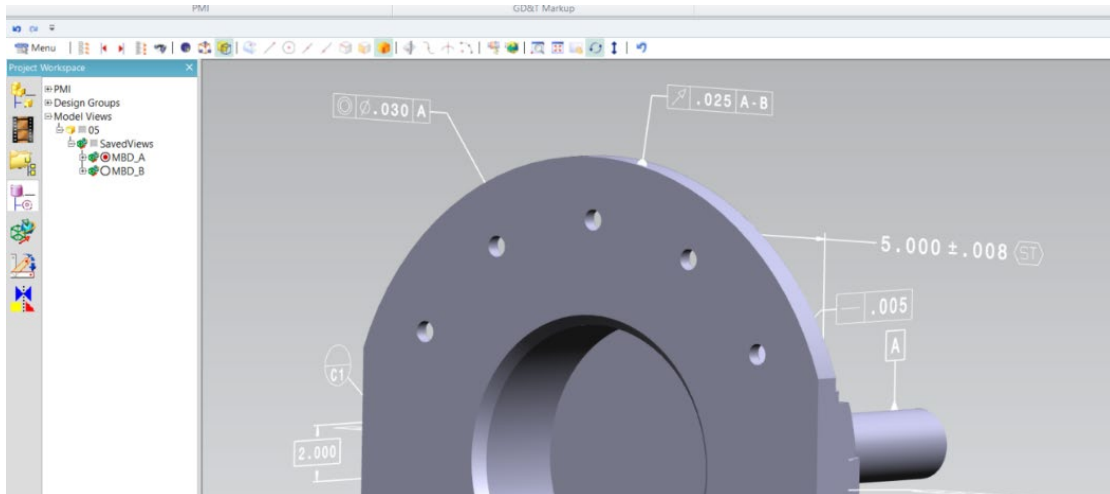
When creating 3D dimensions and annotations with the CATIA V5 FTA module the user can create the text using either stick or filled text fonts. By default, the processing of CATIA V5 filled fonts will recreate the JT output using JT text glyphs. One benefit of using JT glyph-based text definitions is that when the model is reoriented, such that the initial view of the text is reversed, the user can select the annotations to be automatically reoriented. If the filled font representation was created with a simple polygon fill only the character outline would be reoriented and the polygon fill would remain in its original location making the output unreadable.



Picture showing typical CATIA V5 3D Dimensions and Annotations. Note, in the upper dimension the dimensions values 5.000 +/- .008 are created using a filled text font. The characters "ST" in the frame are created using an unfilled stick font.



Picture showing default JT output of V5 FTA data mapped to JT PMI representation



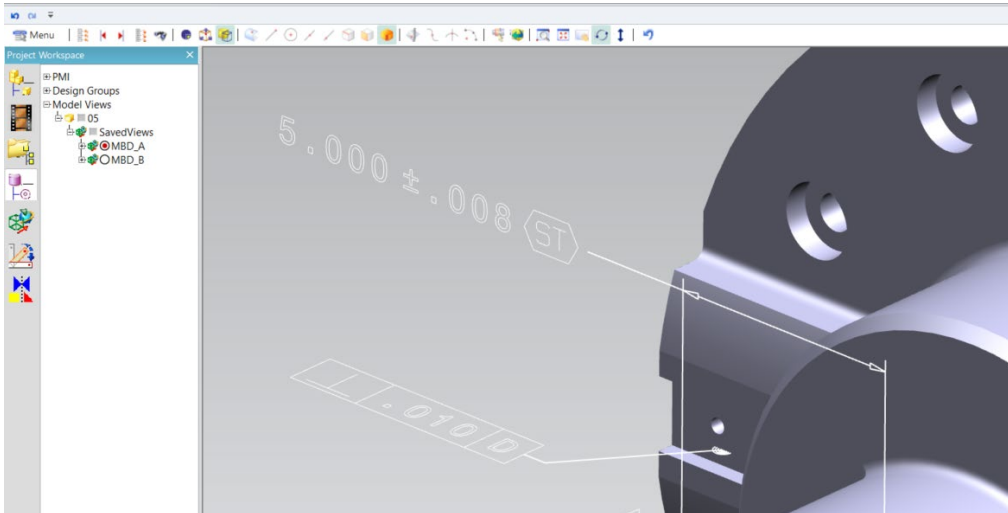
Picture showing the reorientation of the model with the text also reoriented. Note the text characters have been rotated 180 degrees and are now readable with filled character representation.

To recreate the JT filled text using simple polygons, rather than JT text glyph representations, use the options **pmi\_glyphs\_off** **pmi\_polygons** together. The output representation will appear filled and look correct when viewed in the authored orientation. However, filled text created with simple polygons, will not display correctly if the data is reoriented and the text switching in JT is selected. The picture below shows an example of the display when the data is rotated, and the text is reoriented. As you will see the simple polygon fill is still in its original orientation making the dimension unreadable.



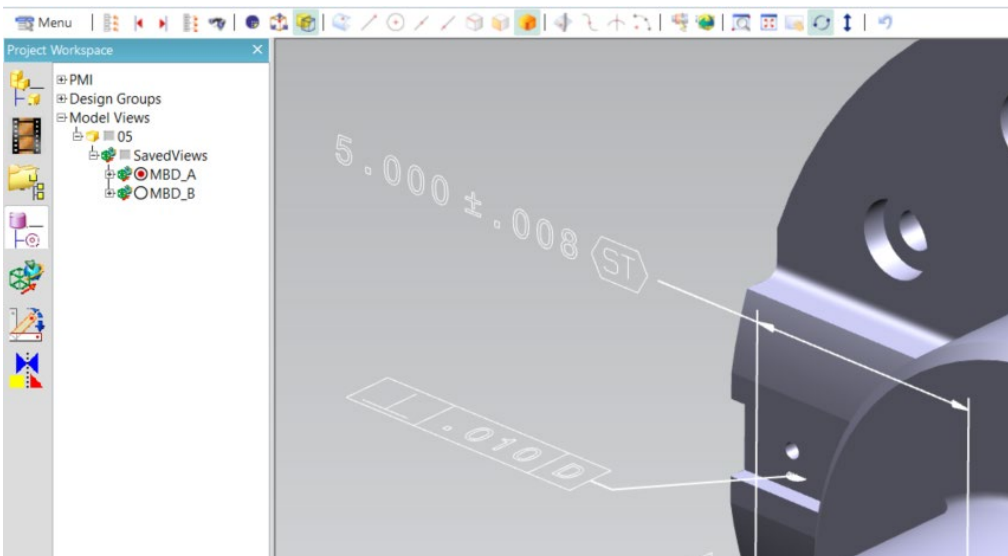
### Options for Processing FTA Data using Outline Text

When processing V5 FTA text data created with filled font definition the user can select to generate the JT text representation as outline text, therefore removing the internal rendering. This is achieved by using the option **pmi\_glyphs\_off**.



Picture showing JT PMI with filled text rendered in outline only. Note the option **pmi\_glyphs\_off** also removes the filled arrowhead rendering.

If you would prefer to maintain filled arrowheads and only impact the characters to be recreated in outline mode, then use the option **dont\_fill\_pmi\_text** instead of the option **pmi\_glyphs\_off**. The resultant output is shown in the picture below with the text drawn in outline and the arrowheads filled.



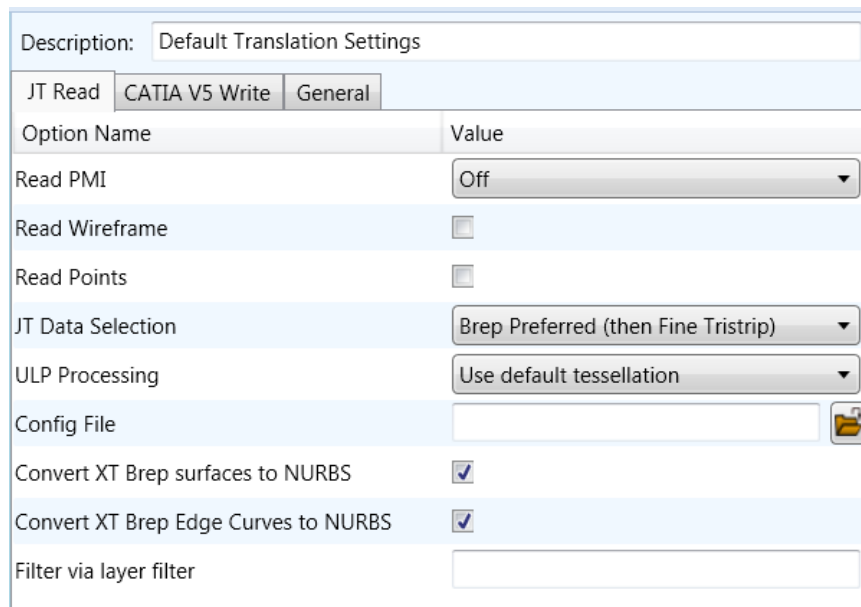
## Common Options for JT to CATIA V5

Within the Configuration Manager pane of the Unified Interface, arguments that can be specified when publishing JT data into CATIA V5 are grouped into 4 areas:

- JT Read – Those arguments that affect how data is read from JT
- CATIA V5 Write – Those arguments that affect how the data is written to JT
- General – Those arguments that are common to ALL Publishing activities regardless of source data

### *JT Read Arguments*

The image below shows the JT Read arguments that are available, with their default settings:




Option Name	Value
Read PMI	Off
Read Wireframe	<input type="checkbox"/>
Read Points	<input type="checkbox"/>
JT Data Selection	Brep Preferred (then Fine Tristrip)
ULP Processing	Use default tessellation
Config File	<input type="text"/>
Convert XT Brep surfaces to NURBS	<input checked="" type="checkbox"/>
Convert XT Brep Edge Curves to NURBS	<input checked="" type="checkbox"/>
Filter via layer filter	<input type="text"/>

Each of these options is described below.

Option	Description
Read PMI	Reads 3D PMI. Default is OFF. <ul style="list-style-type: none"> <li>• Command Line Syntax                             <ul style="list-style-type: none"> <li>○ read_pmi dim2_pmi</li> </ul> </li> </ul>
Read Wireframe	Read JT wireframe data. Default is OFF. <ul style="list-style-type: none"> <li>• Command Line Syntax                             <ul style="list-style-type: none"> <li>○ read_wire_frame</li> </ul> </li> </ul>
Read Points	Read JT point data. Default is OFF. <ul style="list-style-type: none"> <li>• Command Line Syntax                             <ul style="list-style-type: none"> <li>○ read_points</li> </ul> </li> </ul>
JT Data Selection	Select Brep or tessellated data read. Default is 'Brep Preferred (then fine facet)'.

	<ul style="list-style-type: none"> <li>• Command Line Syntax                             <ul style="list-style-type: none"> <li>○ Brep Preferred (then Fine Facet): <code>brep_pref</code></li> <li>○ Brep preferred (then Fine Tristrip): <code>brep_pref_tri</code></li> <li>○ Brep Only: <code>brep_only</code></li> <li>○ Fine Tristrip: <code>fine_tristrips</code></li> <li>○ Coarse Tristrip: <code>coarse_tristrips</code></li> <li>○ Fine Facet: <code>fine_facets</code></li> <li>○ Coarse Facet: <code>coarse_facets</code></li> </ul> </li> </ul>
ULP Processing	<p>How to process ULP data in the JT part. Default is 'Use Default Tessellation'.</p> <ul style="list-style-type: none"> <li>• Command Line Syntax                             <ul style="list-style-type: none"> <li>○ Use Default Tessellation: Default</li> <li>○ Tessellate ULP: <code>tess_ulp</code></li> </ul> </li> </ul>
Config File	<p>Config File for Brep or ULP tessellation.</p> <ul style="list-style-type: none"> <li>• Command Line Syntax                             <ul style="list-style-type: none"> <li>▪ <code>-z [path to file]</code></li> </ul> </li> </ul>
Convert XT Brep surfaces to NURBS	<p>Read XT Brep surfaces as NURBS surfaces (else read in native form). Default is ON.</p> <ul style="list-style-type: none"> <li>• Command Line Syntax                             <ul style="list-style-type: none"> <li>○ <code>noprep</code> – to turn off</li> </ul> </li> </ul>
Convert XT Brep Edge Curves to NURBS	<p>Read XT Brep edge curves as NURBS curves (else read in native form). Default is ON.</p> <ul style="list-style-type: none"> <li>• Command Line Syntax                             <ul style="list-style-type: none"> <li>○ <code>rd_native_edge</code> – to turn off</li> </ul> </li> </ul>
Filter via layer filter	<p>Supply layer filter(s) separated by commas and double quoted. Default is OFF.</p> <ul style="list-style-type: none"> <li>• Command Line Syntax                             <ul style="list-style-type: none"> <li>○ <code>layer_filter</code></li> </ul> </li> </ul>

**CATIA V5 Write Arguments** The image below shows the CATIA V5 Write arguments that are available, with their default settings:

Option Name	Value
Output Geometry File Type	CATPart
Write Face Colours	<input type="checkbox"/>
Show Reference Planes	<input type="checkbox"/>
Property Mapping File	<input type="text"/> 

Each of these options is described below:

Option	Description
Output Geometry File Type	Output Geometry file type. Default is CATPart. <ul style="list-style-type: none"> <li>• Command Line Syntax                             <ul style="list-style-type: none"> <li>○ CATPart: output_type CATPart</li> <li>○ Model: output_type model</li> <li>○ Cgr: output_type cgr</li> <li>○ lgs: output_type igs</li> <li>○ CATShape: output_type CATShape</li> <li>○ Tessellated: create_cgr</li> </ul> </li> </ul>
Write Face Colours	Writes face colours. Default is ON. <ul style="list-style-type: none"> <li>• Command Line Syntax                             <ul style="list-style-type: none"> <li>○ FACE_COLOUR</li> <li>○ SOLID_COLOUR – to turn off</li> </ul> </li> </ul>
Show Reference Planes	Creates reference planes. Default is OFF. <ul style="list-style-type: none"> <li>• Command Line Syntax                             <ul style="list-style-type: none"> <li>○ Show: dont_blank_planes</li> <li>○ No Show: Default</li> </ul> </li> </ul>
Property Mapping File	Path to Property Mapping File <ul style="list-style-type: none"> <li>• Command Line Syntax                             <ul style="list-style-type: none"> <li>○ cad_prop_map_file &lt;file&gt;</li> </ul> </li> </ul>

### *JT to CATIA V5 General Arguments*

JT Read	CATIA V5 Write	General	
Option Name		Value	
Retain Assembly Structure		<input checked="" type="checkbox"/>	
Advanced		<input type="text"/>	

The image below shows the General arguments that are available, with their default settings:

The option is described below:

Option	Description
Retain Assembly Structure	Maintain the assembly structure during translation. <i>(Default is ON)</i> <ul style="list-style-type: none"> <li>• Command Line Syntax:                             <ul style="list-style-type: none"> <li>○ offditto – to turn off</li> </ul> </li> </ul>
Advanced	Allows any of the Command Line Advanced arguments documented below to be passed to the Unified Interface invocation

## Command Line Advanced Arguments

Advanced arguments can be added to the Command Line or the UI General->Advanced field.

### CATIA V5 Advanced Arguments

Argument	Description
convert_curves	Converts curves to NURBS form
convert_surfaces	Converts surfaces to NURBS form
dont_fill_pmi_arrows	Disables the read of filled arrow information
dont_fill_pmi_text	Disables the read of filled text information
dont_read_captures	Disables the read of PMI Capture information
face_opacity	Read face opacity
no_face_colour	Sets the default to SOLID colours
noshow noshow_geom noshow_struct noshow_pmi	Reads hidden geometry / structure / pmi
output_mbd	Allows sub-part specification tree information to be read and presented to JT as product structure information.
read_geometry_edges	CATIA V5 allows the display of shaded surfaces and edges. This option allows the translator to mimic this for FTA construction geometry by promoting the edge curves to standalone wireframe.
cad_prop_map_file <file>	Creates a cad property mapping file containing all attributes if one doesn't exist.
off_ditto	Removes all assembly structure and collapses ALL geometry into a single selectable object

### JT Advanced Arguments

Argument	Description
<b><i>read_wire_frame</i></b>	Enables reading of Wire Frame entities
<b><i>read_ref_planes</i></b>	Reads reference planes

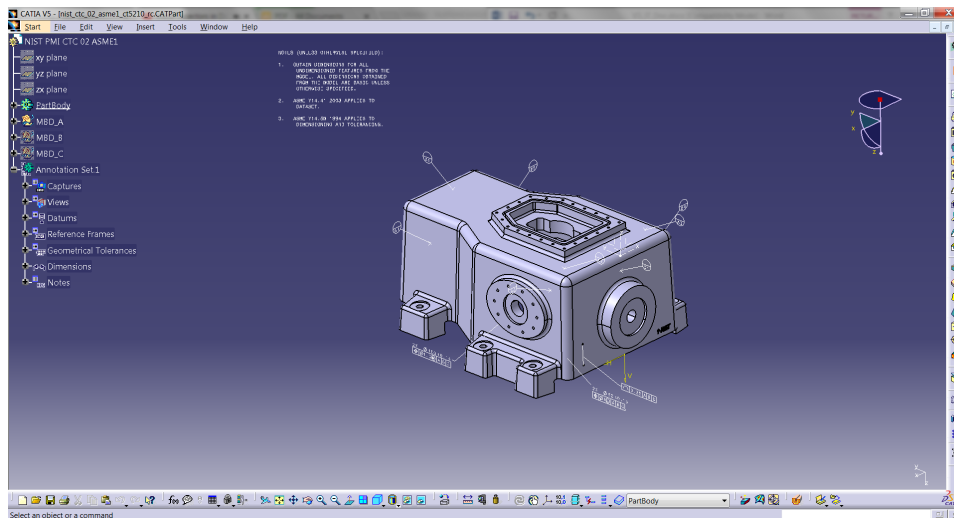
## Translating Interactively from within CATIA V5

The CATIA V5 to JT translator allows an active CATIA V5 Part or Assembly to be translated directly into JT or a JT Part or assembly to be imported, directly from the CATIA V5 application. In order to translate from within CATIA V5, the CATIA V5 application must be started from within a SpinFire Convert environment, so that the appropriate CATIA V5 menus are loaded.

CATIA V5 can be started from a shortcut, if requested at installation time. Alternatively, it can be started via the script provided in the Translator installation at:

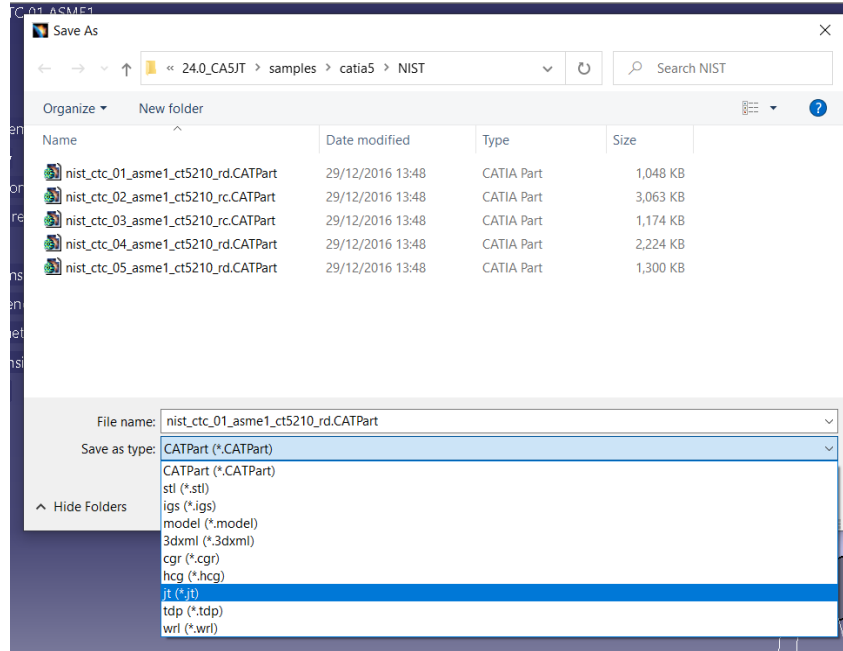
**`<installation_directory>\bin\catia5r[version]_start.cmd`**

(where [version] should be substituted for the version of CATIA V5 that you have installed – e.g. 28, 29, 30, 31):



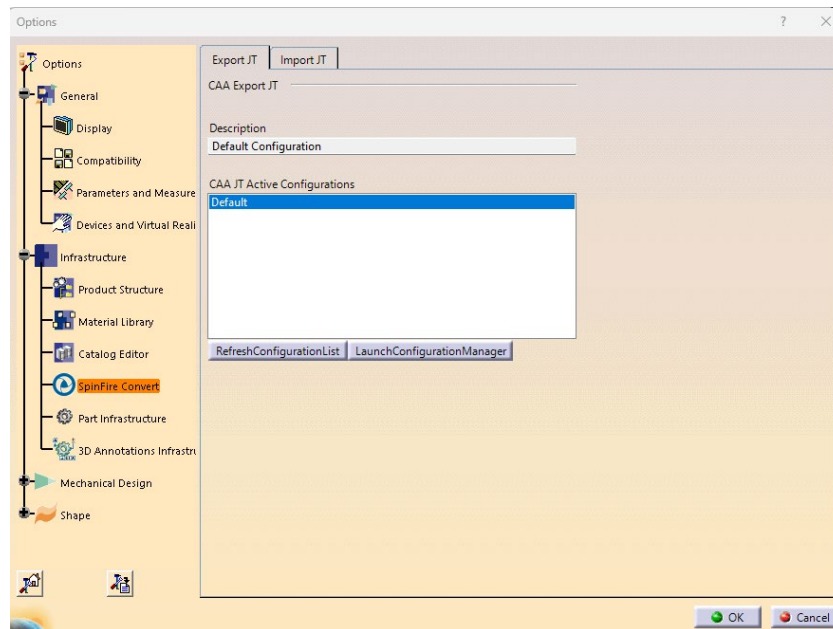
## Save As JT

Once CATIA V5 has been started it is possible for a model to be saved to JT. To do this, the user selects the *File -> Save As* Menu Option. From the file browser window that opens, change the 'Save as type' option to be **jt (\*.jt)**.



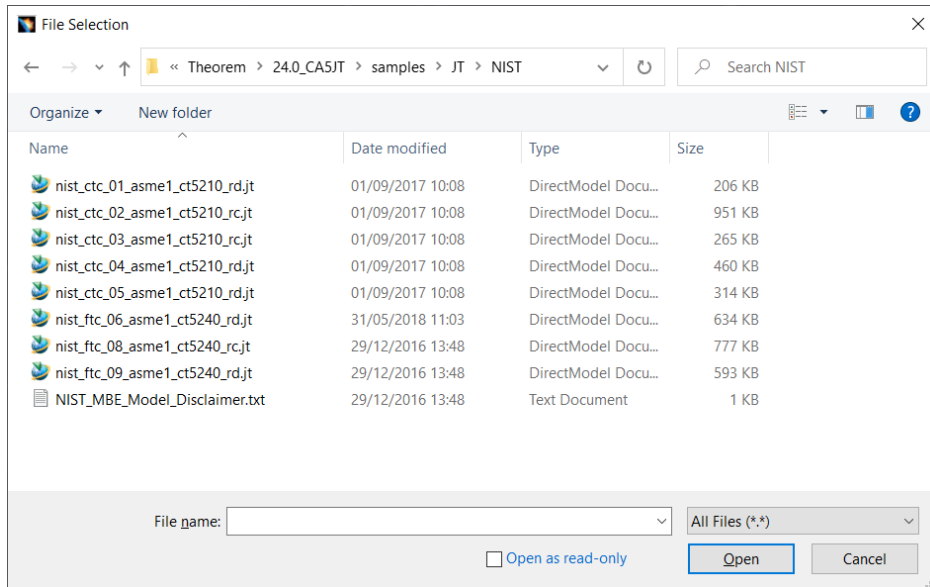
Once selected, press the 'Save' button to create the JT data.

To add a user defined configuration to the process (created from the SpinFire Convert UI), this can be selected from the **Tools>Options>Infrastructure>SpinFire Convert>Export JT** menu. The process will then use this defined configuration to create the JT data as required.

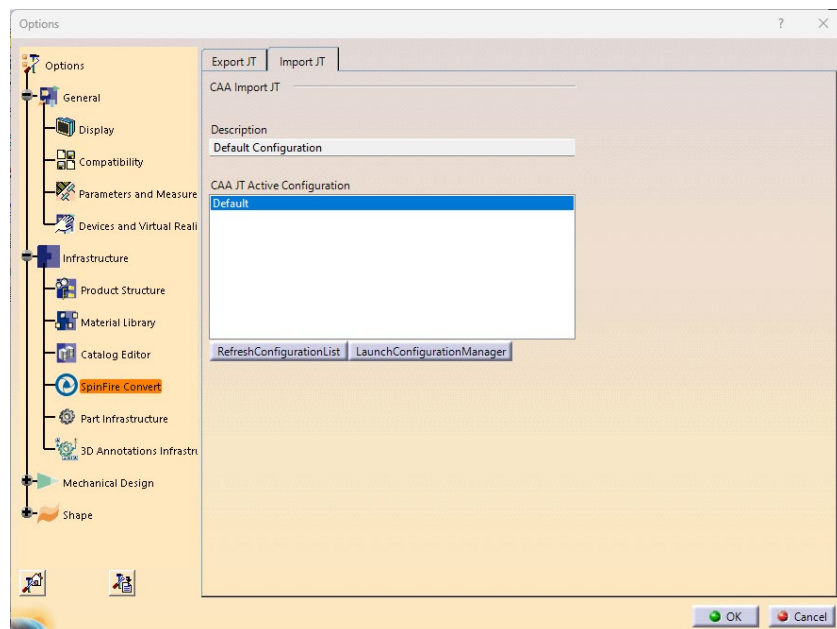


## Open JT Data

Once CATIA V5 has started it is possible for a model to be imported from JT using the *File -> Open* menu. Once selected, find the JT data you wish to import into CATIA V5 and select it from the file browser. When ready, press the 'Open' button from the menu to import.

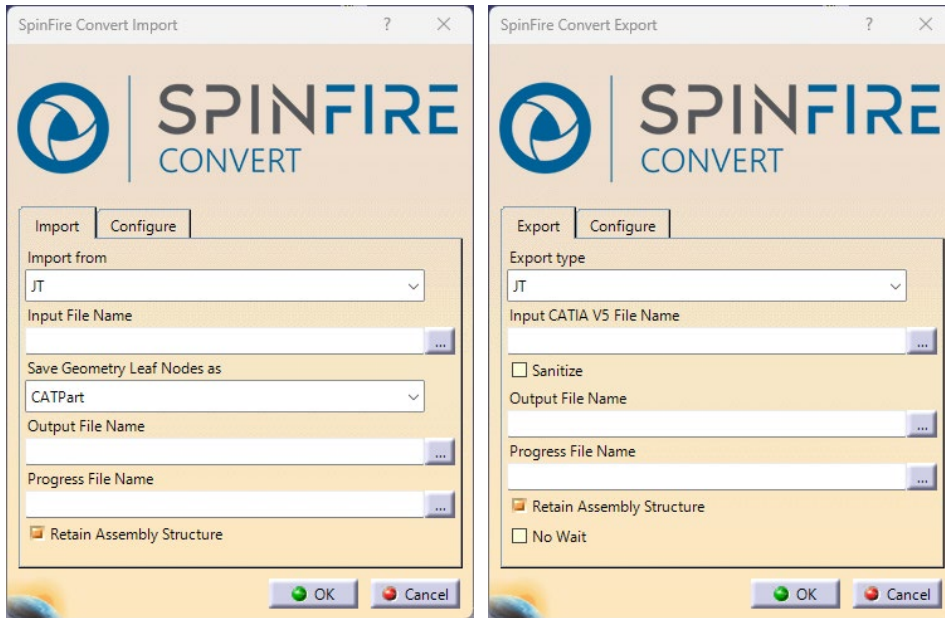


To add a user defined configuration to the process (created from the SpinFire Convert UI), this can be selected from the **Tools>Options>Infrastructure>SpinFire Convert>Import JT** menu. The process will then use this defined configuration to create the JT data as required.



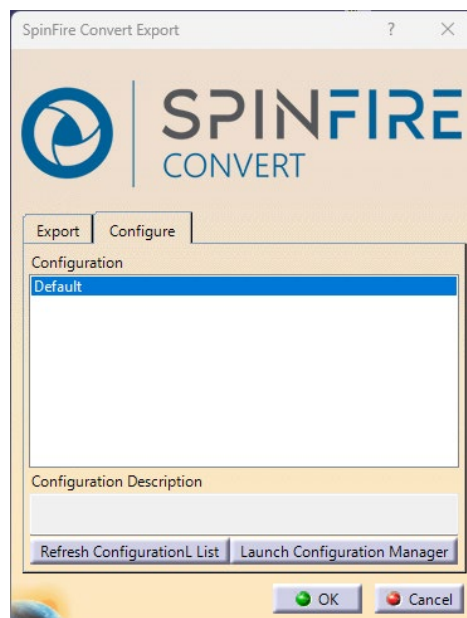
## SpinFire Convert Import and Export

From the 'File' menu in CATIA V5 there are two options : 'SpinFire Convert Import' and 'SpinFire Convert Export'. This allows you to import JT data or export to JT from the File menu. Select 'File' > SpinFire Convert Export' or SpinFire Convert Import' to open the menu.



Provide output file name and log file location, then press 'OK' to export the data.

To add a custom configuration, select the 'Configure' tab.



This allows the user to select a configuration or create a new one by selecting the 'Launch Configuration Manager' option. Once a configuration is decided simply to select it from the list for it to be applied.

## Appendix A – CATIA V5 Configuration

### Introduction

This Appendix details how to define and configure the CATIA V5 and SpinFire Convert environment to work together.

### Conventions

#### *Release of CATIA V5*

To indicate a release of CATIA V5 the notation <XX> shall be used. This needs to be replaced with the specific release to be used i.e.31, 32, 33, 34, 35.

#### *Platform specific directory*

Within the installation directory of CATIA V5 there is a platform specific directory i.e. win\_b64. This directory shall be referred to as **<OSDS>** in this Appendix.

#### *SpinFire Convert Installation directory*

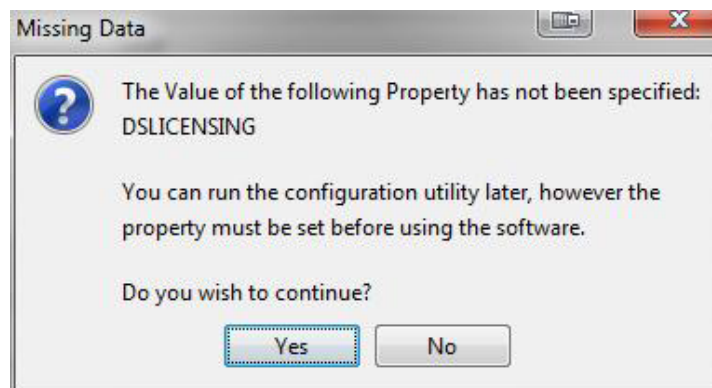
The SpinFire Convert installation directory is set at installation time in the translator **ts\_env.bat** file. This directory shall be noted as **<%TS\_INST%>** in this Appendix.

### CATIA V5 Installation Directory

Upon installation of a CATIA V5 product the user will be asked to specify the installation directory. This is the directory which contains the platform specific <OSDS> directory.

Having selected the CATIA V5 installation directory via the browse button, the installation process will record the location of the CATIA V5 installation directory in the ts\_env.bat file. This file is located in the SpinFire Convert installation directory. If the location of CATIA V5 subsequently changes, the translator can be guided to the changed location by modifying this file using a text editor to modify the **ts\_env.bat** that is located in the translator installation directory.

If no entry is included for DSLICENSING a warning dialog will be displayed which warns of the empty field. Selecting **Yes** to continue will allow the installation to continue.



### Running CATIA V5 Translators

Before running the translator the user must run CATIA V5 interactively at least once to configure the CATIA V5 environment and license settings. This can be achieved by running the `catia5r<XX>_start` script as follows:

**`<Translator_Installation_Directory>\bin\catia5r<XX>_start.cmd`**

Once CATIA has been run the Translator can run as described in the relevant product User Guide.

## CATIA V5 Environment DIRENV & ENV

The default location for CATIA V5 to store its global environment files is in the global directory:  
*Windows 10:*

**`C:\ProgramData\DassaultSystemes\CATEnv`**

*Or*

**`%APPDATA%\CATEnv`**

You can find this location by running:

**`%CATIAV5_INST%\<OSDS>\code\bin\setcatenv -h`**

The environment files are named in the form **`CATIA.V5RN.B<XX>.txt`**

If when installing CATIA V5 the default environment file location was replaced with another location then this location needs to be indicated to the Translator by defining in the **`ts_env.bat`** the environment variable `CATIAV5_DIRENV`:

**`set CATIAV5_DIRENV=/some/directory`**

If the SpinFire Convert installation is needed to support multiple releases of CATIA. Then the user can define release specific locations using:

**`set CATIAV5R<XX>_DIRENV=/some/directory`**

SpinFire Convert attempts to create its own environment file called **`TheoremCatia5R<XX>.txt`**.

The user must therefore have write permission to the CATEnv directory. If this is not possible an existing environment file can be specified using the variable **`CATIAV5_ENV`**. e.g.

**`set CATIAV5_ENV=CATIA.V5R35.B35`**

Note. the extension **`.txt`** is not required. The user can specify a release specific name using **`CATIAV5R<XX>_ENV`** e.g.

**`set CATIAV5R35_ENV=CATIA.V5R31.B35`**

## Checking the CATIA V5 Environment

A script is provided to check that the CATIA V5 environment is set up correctly. In a command window run the command script:

**`%TS_INST%\bin\checkcatia5r<XX>env.cmd`**

## Checking the SpinFire Convert Shared Library

A script is provided to ensure that the CATIA V5 environment is compatible with the SpinFire Convert shared library. In a command window run the command script:

```
%TS_INST%\bin\checkcatia5r<XX>cadverter.cmd
```

Successful output is an indication that the location for CATIA V5 has been specified to the SpinFire Convert translator correctly and that the correct version of the SpinFire Convert CATIA V5 translator products have been installed.

## Appendix B – JT Configuration File

### Introduction

A configuration file contains the settings for your translations. The configuration file can be specified using the command line option `-config` or `-z`.

If this is not supplied the following directories will be searched in the specified order for the named configuration files: (TS\_INST = Installed directory)

- tess.config** in the directory where the translator is run
- tess.config** in TS\_INST\etc directory

Two example config files are provided in the **TS\_INST\etc** directory, a standard **tess.config** one, and one that illustrates the options required for large assembly processing, **tessLargeAssm.config** which is documented by some comments within it.

The JT configuration file contains various sections, each containing different settings based on the section.

### The Setup Section

The setup options in the configuration file define how your files are translated. The setup section is the first part of the configuration file and contains a series of standard translator options.

#### *To edit setup options*

1. Open an existing configuration file with a text editor.
2. Edit the configuration file options listed in the table below.
3. Save the configuration with a `.config` extension

Option name	Keywords	Example
<u>EAITranslator</u>	EAITranslator {	EAITranslator {
<u>OutputDirectory</u>	" <i>path to directory</i> "	OutputDirectory = "/home/<user>/"
<u>CommonPartsPath</u>	" <i>path to directory</i> "	CommonPartsPath= "/myaccount/jtparts/"
<u>chordalOption</u>	"RELATIVE" "ABSOLUTE"	chordalOption = "RELATIVE"
<u>structureOption</u>	"PER_PART" "MONOLITHIC" "FULL_SHATTER"	structureOption = "MONOLITHIC"

<u>WriteWhichFiles</u>	"ALL" "ASSEMBLY_ONLY" "PARTS_ONLY"	WriteWhichFiles = "ALL"
<u>compression</u>	true TRUE false FALSE	compression = true
<u>triStripOpt</u>	true TRUE false FALSE	triStripOpt = false
<u>seamSewing</u>	true TRUE false FALSE	seamSewing = true
<b>Note: Not available for Unigraphics.</b>		
<u>seamSewingTol</u>	<i>any integer</i>	seamSewingTol = 0.001
<u>includeBrep</u>	true TRUE false FALSE	includeBrep = false
<u>brepPrecision</u>	"SINGLE" "DOUBLE"	brepPrecision = "SINGLE"
<u>autoNameSanitize</u>	true TRUE false FALSE	autoNameSanitize = true
<u>updateChangedPartsOnly</u>	true	updateChangedPartsOnly = false

	TRUE false FALSE	
<u>verboseReporting</u>	true TRUE false FALSE	verboseReporting = false
<u>writeAsciiAssembly</u>	true TRUE false FALSE	writeAsciiAssembly = false
<u>singlePartsNoAssem</u>	true TRUE false FALSE	singlePartsNoAssem = false
<u>smartLODgeneration</u>	true TRUE false FALSE	smartLODgeneration = true
<u>autoLowLODgeneration</u>	true TRUE false FALSE	autoLowLODgeneration = true
<u>numLODs</u>	<i>any integer</i>	numLODs = 3
<u>close brace</u>	}	}

## The Filter Section

The filter section of the configuration file contains the filename and metadata filtering information. Edit this section if you want to change how the translator sanitizes filenames and filters metadata keys.

### *To edit filter options*

1. Open an existing configuration file with a text editor.
2. Edit the configuration file options from the table below.
3. Save the configuration with a .config extension

Option name	Keywords	Example
<u>Filter</u>	Filter {	Filter {
<u>FilenameSanitizeSet</u>	"string of characters"	FilenameSanitizeSet = "abc123."
<u>FilenameSanitizeSetAdd</u>	"string of characters"	FilenameSanitizeSetAdd = "4 "
<u>FilenameSanitizeSetDelete</u>	"string of characters"	FilenameSanitizeSetDelete = "c"
<u>MetadataKey</u>	"string of characters"	MetadataKey = "metadata key to exclude"
<u>close brace</u>	}	}

## The Metadata Section

The metadata section sets which metadata to attach to all parts, assemblies and nodes of the model.

**Note:** Be sure to add these options to the configuration file in pairs: one line to define the metadata key and one line to define the metadata value.

### *To edit metadata options*

1. Open an existing configuration file (.CONFIG) in a text editor.
2. Edit the configuration file options shown in the table below.
3. Save the configuration with a .config extension

Option name	Keywords	Example
<u>Metadata</u>	Metadata {	Metadata {
<u>AddToParts</u>	"string of characters"	AddToParts = "<metadata key>" AddToParts = "<metadata value>"

<u>AddToAssemblies</u>	<i>"string of characters"</i>	AddToAssemblies = "<metadata key>" AddToAssemblies = "<metadata value>"
<u>AddToAllNodes</u>	<i>"string of characters"</i>	AddToAllNodes = "<metadata key>" AddToAllNodes = "<metadata value>"
<u>close brace</u>	}	}

## The Level of Detail Section

The level of detail section of the configuration file contains the tessellation and simplification information for each level of detail in the file.

This section consists of several sets of level of detail (LOD) information, and the number of these sets depends on the number you specified on the numLODs line in the configuration file.

### To edit level of detail options

1. Open an existing configuration file in a text editor.
2. Edit the configuration file options listed below.
3. Save the configuration with a .config extension

Option name	Keywords	Example
<u>LOD</u>	LOD " <i>lod number</i> " {	LOD "1" {
<u>Level</u>	<i>any integer</i>	Level = 1
<u>Chordal</u>	<i>any number</i>	Chordal = 0.001
<u>Angular</u>	<i>any number</i>	Angular = 25
<u>Length</u>	<i>any number</i>	Length = 1
<u>FeatureSuppression</u>	<i>any integer</i>	FeatureSuppression = 0
<u>Simplify</u>	<i>any number</i>	Simplify = 0.60
<u>close brace</u>	}	}

## The JT Options Section

The JT Options section of the configuration file contains arguments for JT data.

### To edit special options

1. Open an existing configuration file with a text editor.

2. Edit the configuration file options shown in the table below.
3. Save the configuration with a .config file extension.

- 

Option	Keyword	Example	Default Value
<u>JtOptions</u>	JtOptions {	JtOptions {	
AddSemanticPMI	true TRUE false FALSE	AddSemanticPMI = true	true
AnnotationPlanesViewsetName	Character string	AnnotationPlanesViewsetName = "Views"	Views
AppendCADExtension	true TRUE false FALSE	AppendCADExtension = false	true
BrepType	XT JT XTJT	BrepType = true	XT
BrepWireframe	true TRUE false FALSE	BrepWireframe = false	false
CadPropertyMappingFile	Character String	CadPropertyMappingFile = "%TS_INST%\data\jt\jt_property_mapping.txt"	
CollapseHierarchy	SOLtoDetail toSets toPart SURandFACToDetail toPartOptimized expandPart	CollapseHierarchy = SOLtoDetail	SOLtoDetail
DefaultLayerFilter	"Character String"	DefaultLayerFilter = ""	""

EnhanceColour	true TRUE  false FALSE	EnhanceColour = true	true
ExpandPart	true TRUE  false FALSE	ExpandPart = false	false
ExplodeSolidsToFaces	true TRUE  false FALSE	ExplodeSolidsToFaces = false	false
ExternalDetailNaming	Character string	ExternalDetailNaming = ""	""
FaceEdgeTol	Real	FaceEdgeTol = 0.000006	0.000006
FixDegenerateEdges	true TRUE  false FALSE	FixDegenerateEdges = true	true
FixSmallFeaturesOpenSolids	true TRUE  false FALSE	FixSmallFeaturesOpenSolids = false	false
FixSmallFeaturesSolids	true TRUE  false FALSE	FixSmallFeaturesSolids = false	false
ForceBodyCreation	true TRUE  false FALSE	ForceBodyCreation = true	true
IncrementalSewing	true TRUE  false FALSE	IncrementalSewing = true	true
IncrementalSewingNoOfiterations	Integer	IncrementalSewingNoOfiterations = 5	5
JtBrepFixup	true TRUE  false FALSE	JtBrepFixup = False	False
LayerFilter	true	LayerFilter = false	false

	TRUE false FALSE		
ModelViews	true TRUE  false FALSE	ModelViews = true	true
NameRootNode	true TRUE  false FALSE	NameRootNode = false	false
OutputUnits	mm cm m inches	OutputUnits = mm	mm
ParasolidTolerantModelling	true TRUE  false FALSE	ParasolidTolerantModelling = true	true
ParasolidTolerantModellingFactor	Integer	ParasolidTolerantModellingFactor = 3	3
PlmxmlPart	true TRUE  false FALSE	PlmxmlPart = false	false
PlmxmlPropertyMappingFile	Character String	PlmxmlPropertyMappingFile = "%TS_INST%\data\jt\plmxml_property_mapping.txt"	
PmiAttributeMap	true TRUE  false FALSE	PmiAttributeMap = false	false
PmiAttributeMapFilename	"Character String"	PmiAttributeMapFilename = ""	
PmiAttributeSplit	true TRUE  false FALSE	PmiAttributeSplit = false	false
PmiInstAssoc	true TRUE  false FALSE	pmi_inst_assoc = false	false

PmiGlyphs	2D 3D off	PmiGlyphs = 3D	3D
PmiPolygons	true TRUE  false FALSE	PmiPolygons = false	false
ViewCalcs	AUTO ON OFF	view_calc_auto view_calc_on view_calc_off	AUTO
ProduceTessellatedOutput	true TRUE  false FALSE	ProduceTessellatedOutput = false	false
ReuseSolids	true TRUE  false FALSE	ReuseSolids = false	false
SavedViewsViewsetName	"Character String"	SavedViewsViewsetName = "Captures"	Captures
SewParasolidBodies	true TRUE  false FALSE	SewParasolidBodies = true	true
SewParasolidBodiesTol	Real	SewParasolidBodiesTol = 0.01	0.01
ShineSetting	Integer	ShineSetting = 30	30
SimplifyGeometry	true TRUE  false FALSE	SimplifyGeometry = false	false
SplitDiscontinuousSurfaces	true TRUE  false FALSE	SplitDiscontinuousSurfaces = false	false
StructureOutputType	JT PLMXML PLMXMLJT STEPBOM STEPBOM_E2	StructureOutputType = JT	JT
SubNode	true TRUE  false	SubNode = false	false

	FALSE		
UseInstanceNames	true TRUE  false FALSE	UseInstanceNames = false	false
FlushRootNodeColour	true TRUE  false FALSE	FlushRootNodeColour = false	false
ExplodeSolidIntoFaces	true TRUE  false FALSE	ExplodeSolidIntoFaces = false	false
AddSolidNodes	true TRUE  false FALSE	AddSolidNodes = false	false
WriteSubAssyFiles	true TRUE  false FALSE	WriteSubAssyFiles = false	false
create_cadid	true TRUE  false FALSE	create_cadid = false	false
cadid_attr	Character String	cadid_attr = ""	
cadid_fname	Character String	cadid_fname = ""	
<u>close brace</u>	}	}	

## The Catia5 Options Section

The Catia5 Options section of the configuration file contains arguments for Catia5 data.

### To edit special options

1. Open an existing configuration file with a text editor.
2. Edit the configuration file options shown in the table below.
3. Save the configuration with a .config file extension.

Option	Keyword	Example	Default Value
--------	---------	---------	---------------

Catia5Options	Catia5Options {	Catia5Options {	
ApplyTrimmingLimits	true TRUE  false FALSE	ApplyTrimmingLimits = false	false
AssemblyReportFilename	Character string	AssemblyReportFilename = ""	
ConvertSurfaceFaceLimits	On Off Powerfill	ConvertSurfaceFaceLimits = On	On
ConvertGenericFilletSurfaceTol	Real	ConvertGenericFilletSurfaceTol = 0.0001	0.0001
ConvertCurvesToNurbs	true TRUE  false FALSE	ConvertCurvesToNurbs = false	false
ConvertCurvesToNurbsTol	Real	ConvertCurvesToNurbsTol = 0.00001	0.00001
ConvertSurfacesToNurbs	None Fillet Spheres Fillet+Spheres	ConvertSurfacesToNurbs = None	None
ConvertSurfacesToNurbsTol	Real	ConvertSurfacesToNurbsTol = 0.00001	0.00001
DecimalSeparator	dot comma	DecimalSeparator = dot	dot
ExcludeList	Character String	exclude_list = ""	
ExcludeDisplayNameList	Character String	exclude_displayname_list = ""	
GenerateEmptyPart	true TRUE  false	GenerateEmptyPart = false	false

	FALSE		
HybridJT	true TRUE  false FALSE	HybridJT = false	false
IncludeList	Character String	include_list = ""	
IncludeDisplayNameList	Character String	include_displayname_list = ""	
InstanceNaming	Character String	InstanceNaming = ""	
MaximumNurbsDegree	Integer	MaximumNurbsDegree = 5	5
MergeList	Character String	merge_list = ""	
MergeCGRVertices	true TRUE  false FALSE	MergeCGRVertices = false	false
NonManifold	true TRUE  false FALSE	NonManifold = false	false
NoShowList	Character String	Noshow_list = ""	
OpacityZero	Real	OpacityZero = 0.1	0.1
OutputMBD	true TRUE  false FALSE	OutputMBD = false	false
OutputMBDLeafNodes	true TRUE  false FALSE	OutputMBDLeafNodes = false	false
PrintInfo	true	PrintInfo = true	true

	TRUE  false FALSE		
ProcessCaptures	true TRUE  false FALSE	ProcessCaptures = false	false
ProcessEsplice	true TRUE  false FALSE	ProcessEsplice = false	false
ProcessElectrical	true TRUE  false FALSE	ProcessElectrical = false	false
ProcessHybridJT	true TRUE  false FALSE	ProcessHybridJT = false	false
ProcessLargeFaces	HideLargeFaces AllowLargefaces DatumFaces True False	ProcessLargeFaces = Datumfaces	DatumFaces
ProcessLayers	ALL_LAYERS  A comma separated list of layer numbers(0 - 255), using hyphen '-' to separate number ranges.	ProcessLayers = ALL_LAYERS	ALL_LAYERS

ProcessMotion	true TRUE  false FALSE	ProcessMotion = false	false
ProcessOpenSolids	true TRUE  false FALSE	ProcessOpenSolids = true	true
ProcessPMI	true TRUE  false FALSE	ProcessPMI = false	false
ProcessPoints	true TRUE  false FALSE	ProcessPoints = true	true
ProcessSolids	true TRUE  false FALSE	ProcessSolids = true	true
ProcessWelds	true TRUE  false FALSE	ProcessWelds = false	false
ProcessWireFrame	true TRUE  false FALSE	ProcessWireFrame = true	true
ReadCachedCGR	true	ReadCachedCGR = false	false

	TRUE false FALSE		
ReadCGREdges	true TRUE false FALSE	ReadCGREdges = true	true
ReadFaceColours	true TRUE false FALSE	ReadFaceColours = true	true
ReadFTAReferenceGeometry	true TRUE false FALSE	ReadFTAReferenceGeometry = false	false
ReadHiddenData	None Geometry Structure All	ReadHiddenData = None	None
ReadInfiniteAxis	true TRUE false FALSE	ReadInfiniteAxis = false	false
ReadLeafNodeCGR	true TRUE false FALSE	ReadLeafNodeCGR = true	true
ReadMotion	true TRUE	ReadMotion = false	false

	false FALSE		
ReadNOA	true TRUE  false FALSE	ReadNOA = false	false
ReadScanData	true TRUE  false FALSE	ReadScanData = true	true
ReadSpaceReservations	true TRUE  false FALSE	ReadSpaceReservations = false	false
ReduceNurbsSurfaceDegree	true TRUE  false FALSE	ReduceNurbsSurfaceDegree = false	false
RetainAssemblyStructure	true TRUE  false FALSE	RetainAssemblyStructure = true	true
RetainTrailingZeros	true TRUE  false FALSE	RetainTrailingZeros = false	false
SimplifyCurves	true TRUE  false	SimplifyCurves = false	false

	FALSE		
SimplifyProgressFile	true TRUE  false FALSE	SimplifyProgressFile = false	false
SelectionSets	true TRUE  false FALSE	SelectionSets = false	false
SurfaceChecking	true TRUE  false FALSE	SurfaceChecking = false	false
SurfaceCheckingTol	Real	SurfaceCheckingTol = 0.001	0.001
TextName	true TRUE  false FALSE	TextName = false	false
TopGroupPerBody	true TRUE  false FALSE	TopGroupPerBody = false	false
TrimFaceSurfaces	true TRUE  false FALSE	TrimFaceSurfaces = true	true
UDFAxisSystems	true TRUE  false	UDFAxisSystems = false	false

	FALSE		
ViewContext	Default3D Unfolded	ViewContext = Default3D	Default3D
<u>close brace</u>	}	}	

## The Catia4 Options Section

The Catia4 Options section of the configuration file contains arguments for Catia4 data.

### To edit special options

1. Open an existing configuration file with a text editor.
2. Edit the configuration file options shown in the table below.
3. Save the configuration with a .config file extension.

Option	Keyword	Example	Default Value
Catia4Options	Catia4Options {	Catia4Options {	
CatiaAssemblyPartsPath	ASIS SET LAYER ENTITYTYPE VIEW	ColourVisualizationMode = ASIS	ASIS
ColourVisualizationMode	Character string	AssemblyReportFilename = ""	
FacetColour	true TRUE  false FALSE	FacetColour = false	false
GroupPipes	groupPipelines groupPipes ungroupPipelines	GroupPipes = groupPipelines	groupPipelines

ProcessEntityNames	ALL_ENTITIES  A comma separated list of ENTITY names	ProcessEntityNames = ALL_ENTITIES	ALL_ENTITIES
ProcessFAC	true TRUE  false FALSE	ProcessFAC = true	true
ProcessGPR	true TRUE  false FALSE	ProcessGPR = true	true
ProcessLayers	ALL_LAYERS  CURRENT_LAYER_FILTER  A comma separated list of layer numbers(0 - 255), using hyphen '-' to separate number ranges.	ProcessLayers = ALL_LAYERS	ALL_LAYERS
ProcessModelNumber	Integer	ProcessModelNumber = 1	1
ProcessNOSHOW	true TRUE  false FALSE	ProcessNOSHOW = false	false
ProcessNRBS	true TRUE  false FALSE	ProcessNRBS = true	true

ProcessPIP	true TRUE  false FALSE	ProcessPIP = true	true
ProcessPOI	true TRUE  false FALSE	ProcessPOI = true	true
ProcessSetNames	ALL_SETS  A comma separated lists of SET names	ProcessSetNames = ALL_SETS	ALL_SETS
ProcessSKI	true TRUE  false FALSE	ProcessSKI = true	true
ProcessSOL	true TRUE  false FALSE	ProcessSOL = true	true
ProcessSTR	true TRUE  false FALSE	ProcessSTR = true	true
ProcessSUR	true TRUE  false FALSE	ProcessSUR = true	true
ProcessWireFrame	true	ProcessWireFrame = true	true

	TRUE false FALSE		
UseColorMethod	AS_FILED SET LAYER ENTITY	UseColorMethod = AS_FILED	AS_FILED
<u>close brace</u>	}	}	

## The General Options Section

The General Options section of the configuration file contains general arguments.

### To edit special options

1. Open an existing configuration file with a text editor.
2. Edit the configuration file options shown in the table below.
3. Save the configuration with a .config file extension.

Option	Keyword	Example	Default Value
GeneralOptions	GeneralOptions {	GeneralOptions {	
MassProperties	true TRUE false FALSE	MassProperties = false	false
ProgressFileInformation	true TRUE false FALSE	ProgressFileInformation = true	true
ProgressFileWarnings	true TRUE	ProgressFileWarnings = true	true

	false FALSE		
ReportFilename	Character String	ReportFilename = "%TEMP%\report1.log"	
AdvancedOptions	Character String	AdvancedOptions = ""	
<u>close brace</u>	}	}	

## Appendix C – Error Codes

### Common Error Codes

When processing data, the command screen or log file will show a return code as a status of the translation. These are detailed below.

Return Code	Description
0	Success
1	Issues during write leg such as incomplete run or no arguments given
2	Issue obtaining license
3	Input file argument issue or failure to open Progress File
4	Issue during read including no entities read
5	Failure to located secondary process (aka vwr_3dpdf.exe or vwr_jt.cmd)
6	
7	Failure to open CATIA V5 document
8	Failure to find root node of CATIA V5 document
9	Failure to start CATIA V5 session
10	catia5cadverter.dll version doesn't match the catia5_XXX.exe
11	CATIA V4 data given as input file but bi_V4MAIN license available



# SPINFIRE

## CONVERT

*Powered by Theorem Technology*

📍 THEOREM HOUSE  
MARSTON PARK  
BONEHILL RD  
TAMWORTH  
B78 3HU  
UNITED KINGDOM

☎ +44(0)1827 305 350

📍 THEOREM SOLUTIONS INC.  
100 WEST BIG BEAVER  
TROY  
MICHIGAN  
48084  
USA

☎ +1 (513) 576 1100