



## Product Release Announcement

<b>Product Category</b>	<b>Spinfire Convert</b>
Product Group	CATIA V5 for JT
Product Release Version	29.0

<b>Document Type</b>	<b>Product Release Announcement</b>
Document Status	Released
Document Revision	1.0
Document Author	Product Manager
Document Issued	15/04/2026

## Table of Contents

<b>History .....</b>	<b>3</b>
<b>Product Codes.....</b>	<b>4</b>
<i>Base Product - New.....</i>	<i>4</i>
<i>Base Product - Historical (Existing Licenses) .....</i>	<i>4</i>
<i>Add Ons.....</i>	<i>4</i>
<b>Supported Application Revisions .....</b>	<b>5</b>
<b>Supported Operating Systems .....</b>	<b>5</b>
<b>Installation Process Considerations .....</b>	<b>6</b>
<b>Distribution Media.....</b>	<b>6</b>
<b>New Features / Enhancements .....</b>	<b>7</b>
CATIA V5 - JT .....	7
<b>Known Limitations and Restrictions.....</b>	<b>8</b>
CATIA V5 to JT (CA5JT) .....	8
JT to CATIA V5 (JTCA5) .....	8
General.....	8
<b>Resolved Support Calls .....</b>	<b>9</b>

## History

Revision	Update Information
1.0	Initial document release for Version 29.0

## Product Codes

### Base Product - New

Product Code	Product Description
<b>CA5JT-PRO</b>	PRO License - CATIA V5 (CAA Based) to JT (uni-directional)
<b>JTCA5-PRO</b>	PRO License - JT to CATIA V5 (CAA Based ) (uni-directional)
<b>CA5JT-STD</b>	STD License - CATIA V5 (CAA Based) to JT (uni-directional)
<b>JTCA5-STD</b>	STD License - JT to CATIA V5 (CAA Based ) (uni-directional)

### Base Product - Historical (Existing Licenses)

Product Code	Product Description
<b>CA5JT-U1</b>	CATIA V5 (CAA Based) to JT (uni-directional)
<b>JTCA5-U1</b>	JT to CATIA V5 (CAA Based ) (uni-directional)
<b>CATJT-U1</b>	CATIA V4 to JT (uni-directional)
<b>CAGJT-U1</b>	Combined CATIA V4 & CATIA V5 to JT (uni-directional)
<b>CAGJT-U2</b>	Combined CATIA V4 & CATIA V5 to JT (uni-directional) with PMI Add On

### Add Ons

Product Code	Product Description
<b>CA5JT-A5</b>	CATIA V5 (CAA Based ) to JT (uni-directional) with PMI Add On
<b>CA5JT-A6</b>	CATIA V5 (CAA Based ) to JT (uni-directional) with Electrical Add On
<b>CA5JT-A8</b>	CATIA V5 (CAA Based ) to JT (uni-directional) with Composite Services Add On
<b>CA5JT-A9</b>	CATIA V5 (CAA Based ) to JT (uni-directional) with Space Reservations Add On
<b>JTCA5-A2</b>	JT to CATIA V5 (CAA Based ) (uni-directional) with 3DXML Export Module

## Supported Application Revisions

The following application revisions have been qualified with this release.

Application	Revision
CATIA V4	All revisions
CATIA V5	CATIA V5-6R2020 CATIA V5-6R2021 CATIA V5-6R2022 CATIA V5-6R2023 CATIA V5-6R2024 CATIA V5-6R2025 CATIA V5-6R2026
JTOpen	JTK 11.8

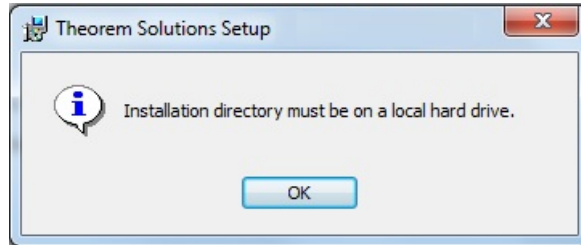
## Supported Operating Systems

The following operating systems have been qualified with this release

Operating System	Qualification Status
Windows 11	Qualified and fully supported for CATIA V4 CATIA V5-6R2020 CATIA V5-6R2021 CATIA V5-6R2022 CATIA V5-6R2023 CATIA V5-6R2024 CATIA V5-6R2025 CATIA V5-6R2026

## Installation Process Considerations

Starting with version 20.0 of Theorem Solutions applications changes have been made to the installation process. These changes have transitioned from a JAVA based installer package to a standard Microsoft Installer (.msi) package. A current limitation of the Microsoft msi method is that the software cannot be installed directly on to either externally mapped or network drives when installed from a client machine:



Therefore, the installation must be performed to a drive that is local to the machine itself. If you are attempting to install the software onto a network drive, then please refer to the configuration guide available from the following link:

[http://www.theorem.com/documentation/Documentation/Client\\_Configuration.pdf](http://www.theorem.com/documentation/Documentation/Client_Configuration.pdf).

## Distribution Media

CD images of the latest release are available from the following download site. The installation media for the bi-directional product is also the same media when installing a uni-directional variant.

Product Codes	Select link to download CD images
All Product Codes for all supported versions of CATIA V5	<a href="#">CAD 29.0 CA5JT WIN.01.msi</a>
Theorem User Interface	<a href="#">CAD 29.0 UI WIN.01.msi</a>
Theorem License Manager	<a href="#">CAD FLEXLM 11.19 WIN.01.msi</a>

## New Features / Enhancements

The following new features or enhancements have been introduced with this release.

### CATIA V5 - JT

Ref ID	New Feature / Enhancement Description
1	<p>Beginning this 29.0 Release, SpinFire Convert is transitioned to PRO and STD licensing. Use of this Release will require an updated license. Existing customers will be updated to the PRO license. The software will continue to work as previously provided. If you are using a 3D PDF product, Customers with a "Create" will be transitioned to STD and those with an "Enhanced" license will transition to PRO.</p> <p>Understanding PRO vs. STD:</p> <ul style="list-style-type: none"> <li>• STD – Export from the CAD Interface only (where applicable).</li> <li>• PRO – Includes STD and provides Batch capabilities via the UI and command line.</li> </ul>
2	Added support for CATIA V5-6R2026
3	Integrated with JT Open Libraries version 11.8
4	General bug fixes and improvements
5	<p>New Translator Options:</p> <ul style="list-style-type: none"> <li>• DONT_READ_ASSOCIATED_V6_DATUM_TARGETS – For use when a 3D EXPERIENCE file has been exported to CATIA V5 for translation into JT and duplicate Datum Targets are found.</li> </ul>
6	

## Known Limitations and Restrictions

The following limitations and restrictions have been identified prior to release.

### CATIA V5 to JT (CA5JT)

Ref ID	Limitations and Restrictions

### JT to CATIA V5 (JTCA5)

Ref ID	Limitations and Restrictions

### General

Ref ID	Limitations and Restrictions

## Resolved Support Calls

The following list of Support Calls are resolved with this release.

Support Call ID	Brief Description
TH-210	PMI in the JT shows leaders clashing with the label name.
TH-441	PMI is not processing correctly.
TH-986	Faces are missing from the JT file
TH-988	Faces are missing from the JT file
TH-1948	Extra face appears in JT file
TH-2020	JT file contains Transparent faces, no Transparency defined in CATIA
TH-2053	in CAITA, the PMI is associated to 7 faces, in JT it is only 5
TH-2058	Datum Geometry highlighting when GD&T Frame is Selected
TH-2078	Curve Highlighting in JT is not matching the V5 Highlighting
TH-2089	VIEW Ref Set contains wrong Node
TH-2090	VIEW Ref Set contains extra Nodes
TH-2091	VIEW Ref Set contains Unwanted Nodes
TH-2092	VIEW Reference Set Contains unwanted nodes
TH-2093	VIEW Ref Set Contains Unwanted nodes
TH-2094	View Ref Set Contains Unwanted Nodes
TH-2096	Resultant JT file is not created
TH-2130	Annotations are duplicated
TH-2135	CATIA V5 to JT: PMI_COLOR is not being applied
TH-2136	JT Cong option "FULL_SHATTER" not creating the proper output
TH-2142	Transparency Issues
TH-2146	Model Tree Points and PMI Tree Point Structure
TH-2260	PMI Association to "LT" Curve is missing
TH-2262	PMI Text notes are missing associations to curves
TH-2263	In CATIA there is a PMI Association to an Extract. The Extract is missing from JT.
TH-2291	Not all PMI Associated Geometry is highlighting.




**SPINFIRE**  
CONVERT


**UK, Europe and Asia  
Pacific Regions**

 THEOREM HOUSE  
MARSTON PARK  
BONEHILL RD  
TAMWORTH  
B78 3HU  
UNITED KINGDOM

 [sales.theorem@techsoft3d.com](mailto:sales.theorem@techsoft3d.com)

 +44 (0) 1827 305 350

**USA and the America**

 THEOREM SOLUTIONS INC  
100 WEST BIG BEAVER  
TROY  
MICHIGAN  
48084  
USA

 [sales-usa.theorem@techsoft3d.com](mailto:sales-usa.theorem@techsoft3d.com)

 +1 (513) 576 1100

 [TECHSOFT3D.COM](http://TECHSOFT3D.COM)